



Custom 1.8" Mini LCD Display Module ST7735S Drive IC TFT Screen Panel

Our Product Introduction

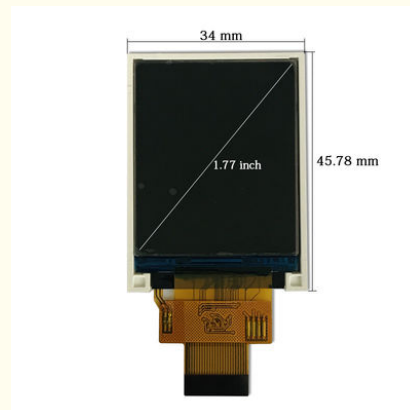
Basic Information

- Place of Origin: ShenZhen , China
- Brand Name: OEM
- Certification: ROHS ISO9001 CE
- Model Number: CH180QQ20A
- Minimum Order Quantity: 100 pcs
- Price: /
- Packaging Details: All the products are packed in right way to keep it safe. For small sizes of products we use tray + carton, For bigger sizes we use foam slot + carton. we also design packages according to customers' requirements
- Delivery Time: 7 - 15 working days
- Payment Terms: T/T
- Supply Ability: 200K PCS / Month

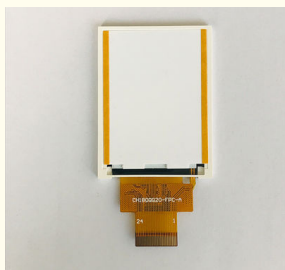


Product Specification

- Product Name: 1.8" Mini Lcd Display Module
- Display Type: 1.8" Tft
- Viewing Direction: 6:00
- Lcd Drive Ic: ST7735S
- Polarizer Mode: Transmissive/Positive
- Operating Temp: -20~70 °C
- Storage Temp: -30~80 °C
- Unmarker Tolerance: ± 0.2
- Highlight: 1.8" Mini LCD Display Module,
ST7735S LCD Display Module,
ST7735S LCD Screen Panel



More Images



Product Description

Custom 1.8" Mini LCD Display Module ST7735S Drive IC TFT Screen Panel

1.8" Mini Lcd Display Module Custom 24 Pin Tft Screen Panel With ST7735S Drive IC

1. Specification of Min Lcd Display Module

Mode	CH180QQ20A
Display Area (W*H)mm	28.032*35.04
Color	65K
Display Mode	Normally White TN,Transmissive
Viewing Direction	6:00
Connection	Connector
Pin number	24
Interface	8bit 8080 system interface
Module Size	1.8 inch

2. Product Description

* ChengHao Display model CH180QQ20A is a color active matrix thin film transistor (TFT) liquid crystal display (LCD) that uses amorphous silicon TFT as a switching device. This model is composed of a TFT LCD panel, a driving IC, a back-light and FPC.

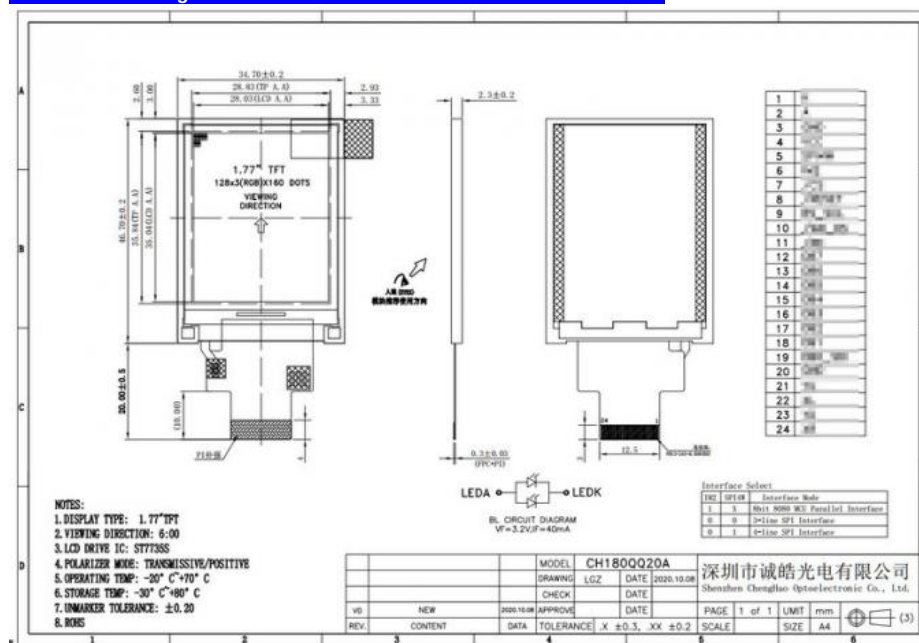
* This TFT LCD has a 1.8 (vertical screen) inch diagonally measured active display area with 128*160 resolution.

* The driver used for this project is the ST7735S or compatible and can display 16M colors by R.G.B. signal input. The driver is mounted on the glass and the interconnection via FPC including components to drive the display module.

* In addition,FPC can also be customized according to customer requirements, such as modifying back-light and FPC structure,interface definition, etc.

* RoHS Compliance & Halogen Free.

3. Product Drawings



4. FAQ

1. who are we?

We are based in Guangdong, China, start from 2016, sell to North America(15.00%), Eastern Europe (14.00%),Western Europe(13.00%),Eastern Asia(8.00%),South Asia(8.00%),Oceania(8.00%),Southeast Asia(8.00%),Southern Europe(6.00%),Northern Europe(6.00%),South America(5.00%),Mid East(5.00%), Central America(2.00%),Domestic Market(2.00%). There are total about 101-200 people in our office.

2. how can we guarantee quality?

Always a pre-production sample before mass production; Always final Inspection before shipment;

3.what can you buy from us?

LCD display,LCD screen,Tft

4. why should you buy from us not from other suppliers?

Chenghao Optoelectronics can provide one-stop color TFT module solutions for various shapes, and can change FPC, pin definition, driver and motherboard according to customers' requirements.

5. what services can we provide?

Accepted Delivery Terms: FOB,CFR,CIF,EXW,FAS,CIP,FCA,CPT,DEQ,DDP,DDU,Express Delivery,DAF,DES
Accepted Payment Currency:USD,EUR,JPY,CAD,AUD,HKD,GBP,CNY,CHF;
Accepted Payment Type: T/T,D/P D/A,PayPal,Western Union;
Language Spoken:English,Chinese,Spanish,Japanese,Portuguese,German,Arabic,French,Russian,Korean, Hindi,Italian

5. Our WorkShop



6. Merchant recommendation

Module Type	Display Area	Display Mode
1.44 inch	25.50 * 26.50 mm	Normally White IPS, Transmissive
1.44 inch	25.50 * 26.50 mm	Normally White TN, Transmissive
1.50 inch	29.76 * 22.32 mm	Normally Black IPS, Transmissive
1.54 inch	27.72 * 27.72 mm	Normally Black IPS, Transmissive
1.54 inch	27.74 * 27.74 mm	Normally Black IPS, Transmissive
1.77 inch	28.03 * 35.04 mm	Normally White TN, Transmissive
1.80 inch	28.03 * 35.04 mm	Normally White TN, Transmissive
2.00 inch	30.60 * 40.80 mm	Normally White TN, Transmissive
2.10 inch	Circular display area	Normally White IPS, Transmissive
2.31 inch	46.75 * 35.06 mm	Normally White TN, Transmissive
2.40 inch	36.72 * 48.96 mm	Normally White TN, Transmissive
2.40 inch	36.72 * 48.96 mm	Normally White IPS, Transmissive
2.80 inch	43.20 * 57.60 mm	Normally White TN, Transmissive

2.80 inch	43.20 * 57.60 mm	Normally White IPS, Transmissive
3.00 inch	36.72 * 65.28 mm	Normally Black IPS, Transmissive
3.20 inch	48.60 * 64.80 mm	Normally White TN, Transmissive
3.50 inch	70.08 * 52.56 mm	Normally White TN, Transmissive
3.50 inch	70.08 * 52.56 mm	Normally Black IPS, Transmissive
4.00 inch	51.84 * 86.4 mm	Normally Black IPS, Transmissive
4.00 inch	71.86 * 70.18 mm	Normally Black IPS, Transmissive
4.30 inch	95.04 * 53.86 mm	Normally White TN, Transmissive
4.30 inch	95.04 * 53.86 mm	Normally Black IPS, Transmissive
5.00 inch	110.88 * 62.83 mm	Normally White TN, Transmissive
5.00 inch	108.00 * 64.8 0mm	Normally Black IPS, Transmissive
5.50 inch	68.04 * 120.96 mm	Normally Black IPS, Transmissive
6.00 inch	74.52 * 132.48 mm	Normally Black IPS, Transmissive
7.00 inch	154.08 * 85.92 mm	Normally White TN, Transmissive
7.00 inch	153.6 * 90 mm	Normally White TN, Transmissive
7.00 inch	154.21 mm * 85.92 mm	Normally Black IPS, Transmissive
8.00 inch	107.64 * 172.22 mm	Normally Black IPS, Transmissive
9.00 inch	196.61 * 114.15 mm	Normally White TN, Transmissive
10.1 inch	135.36 * 216.58 mm	Normally Black IPS, Transmissive



Shenzhen ChengHao Optoelectronic Co., Ltd.



+86 755-27806536



add@chenghaolcm.com



chenghaolcd.com

7th floor, building C5, Hengfeng Industrial City, Hangcheng street, Bao'an District, Shenzhen