



## 240×320 Dot Matrix Lcd Module ISO9001 ST7789V Ips Tft Screen Module

### Our Product Introduction

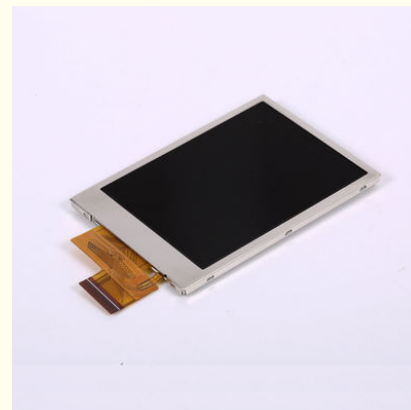
#### Basic Information

- Place of Origin: ShenZhen , China
- Brand Name: OEM
- Certification: ROHS ISO9001 CE
- Model Number: CH240QV47A
- Minimum Order Quantity: 100 pcs
- Price: /
- Packaging Details: All the products are packed in right way to keep it safe. For small sizes of products we use tray + carton, For bigger sizes we use foam slot + carton. we also design packages according to customers' requirements
- Delivery Time: 7 - 15 working days
- Payment Terms: T/T
- Supply Ability: 200K PCS / Month



#### Product Specification

- LCD Type: 2.4"
- Dot Arrangement: 240×320 Dots
- Color Filter Array: RGB Vertical Stripe
- Display Mode: IPS/Transmissive/NormallyBlack
- Viewing Direction: 80/80/80/80
- Driver IC: ST7789V
- Highlight: 240×320 Dot Matrix Lcd Module, Dot Matrix Lcd Module ISO9001, ST7789V Ips Tft Screen Module



#### More Images



## Product Description

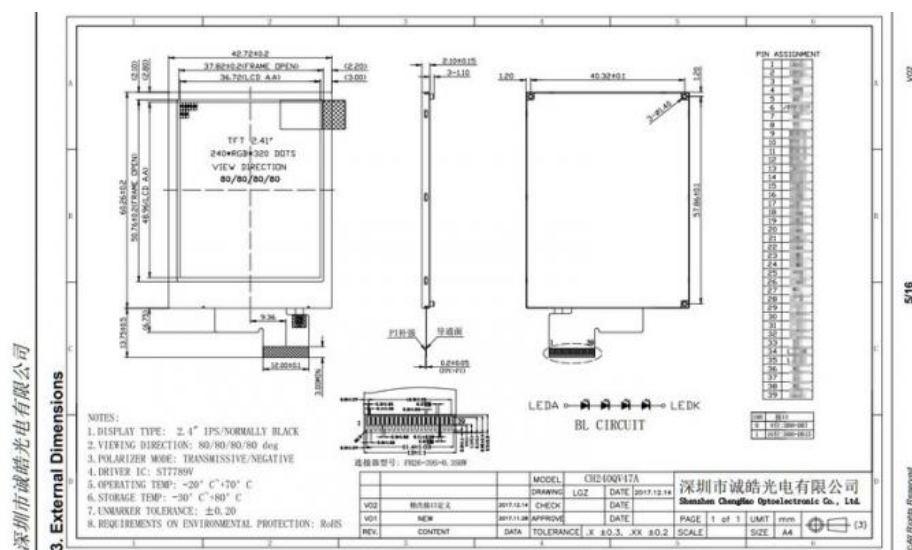
### 240×320 Dot Matrix Lcd Display Module Ips ALL Viewing Direction Tft Screen Module

#### Product Information

##### 1. Product parameter

ITEM	STANDARD VALUES
LCD type	2.4"
Dot arrangement	240(RGB)×320 dots
Color filter array	RGB vertical stripe
Display mode	IPS/Transmissive/NormallyBlack
Viewing Direction	80/80/80/80
Driver IC	ST7789V
Module size	42.72(W)×60.26(H)×2.1(T) mm

##### 2. Product Drawings



##### 3. Product Description

ChengHao Display model CH240QV47A is a color active matrix thin film transistor (TFT) liquid crystal display (LCD) that uses amorphous silicon TFT as a switching device. This model is composed of a TFT LCD panel, a driving IC, a back-light and FPC.

This TFT LCD has a 2.4 (Vertical screen) inch diagonally measured active display area with 240\*3(RGB)\*320 resolution.

The driver used for this project is the HX8238D or compatible and can display 65k/262k colors by R.G.B. signal input. The driver is mounted on the glass and the interconnection via FPC including components to drive the display module.

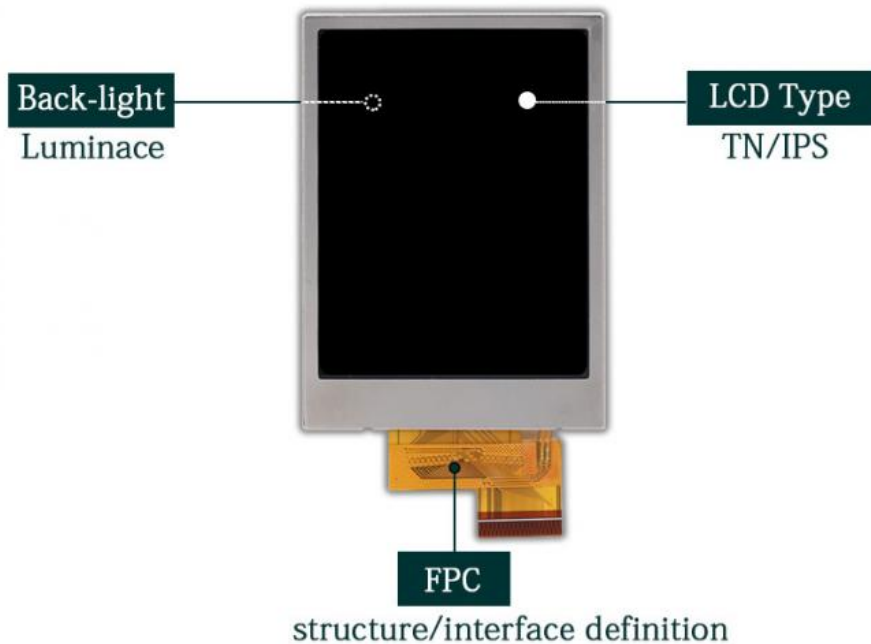
In addition, FPC can also be customized according to customer requirements, such as modifying back-light and FPC structure, interface definition, etc.

RoHS Compliance & Halogen Free.

#### Product Customization

# Product Customization

The part marked in the figure below is the content that can be customized according to customer's request



We can according to your demand to customized your display.

Such as customized the frame, backlight brightness, backlight shape, long-life led wick, FPC shape and interface definition, silk-printing your Logo and so on.

## Product List

Module Type	Display Area	Display Mode
1.44 inch	25.50 * 26.50 mm	Normally White IPS, Transmissive
1.44 inch	25.50 * 26.50 mm	Normally White TN, Transmissive
1.50 inch	29.76 * 22.32 mm	Normally Black IPS, Transmissive
1.54 inch	27.72 * 27.72 mm	Normally Black IPS, Transmissive
1.54 inch	27.74 * 27.74 mm	Normally Black IPS, Transmissive
1.77 inch	28.03 * 35.04 mm	Normally White TN, Transmissive
1.80 inch	28.03 * 35.04 mm	Normally White TN, Transmissive
2.00 inch	30.60 * 40.80 mm	Normally White TN, Transmissive
2.10 inch	Circular display area	Normally White IPS, Transmissive
2.31 inch	46.75 * 35.06 mm	Normally White TN, Transmissive
2.40 inch	36.72 * 48.96 mm	Normally White TN, Transmissive
2.40 inch	36.72 * 48.96 mm	Normally White IPS, Transmissive
2.80 inch	43.20 * 57.60 mm	Normally White TN, Transmissive
2.80 inch	43.20 * 57.60 mm	Normally White IPS, Transmissive
3.00 inch	36.72 * 65.28 mm	Normally Black IPS, Transmissive
3.20 inch	48.60 * 64.80 mm	Normally White TN, Transmissive
3.50 inch	70.08 * 52.56 mm	Normally White TN, Transmissive
3.50 inch	70.08 * 52.56 mm	Normally Black IPS, Transmissive
4.00 inch	51.84 * 86.4 mm	Normally Black IPS, Transmissive
4.00 inch	71.86 * 70.18 mm	Normally Black IPS, Transmissive
4.30 inch	95.04 * 53.86 mm	Normally White TN, Transmissive
4.30 inch	95.04 * 53.86 mm	Normally Black IPS, Transmissive
5.00 inch	110.88 * 62.83 mm	Normally White TN, Transmissive
5.00 inch	108.00 * 64.80 mm	Normally Black IPS, Transmissive
5.50 inch	68.04 * 120.96 mm	Normally Black IPS, Transmissive
6.00 inch	74.52 * 132.48 mm	Normally Black IPS, Transmissive
7.00 inch	154.08 * 85.92 mm	Normally White TN, Transmissive
7.00 inch	153.6 * 90 mm	Normally White TN, Transmissive
7.00 inch	154.21 mm * 85.92 mm	Normally Black IPS, Transmissive
8.00 inch	107.64 * 172.22 mm	Normally Black IPS, Transmissive
9.00 inch	196.61 * 114.15 mm	Normally White TN, Transmissive
10.1 inch	135.36 * 216.58 mm	Normally Black IPS, Transmissive

Shop Home



Shenzhen ChengHao Optoelectronic Co., Ltd.



+86 755-27806536



add@chenghaolcm.com



chenghaolcd.com

7th floor, building C5, Hengfeng Industrial City, Hangcheng street, Bao'an District, Shenzhen