



## ISO9001 IPS 5in MIPI Lcd Display Module 480×854 Dot Matrix Tft Display

### Our Product Introduction

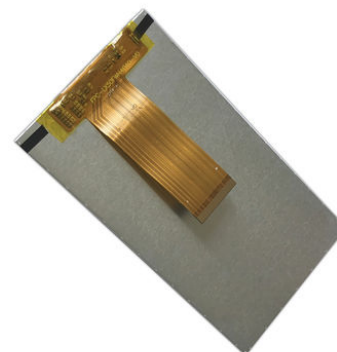
#### Basic Information

- Place of Origin: ShenZhen, China
- Brand Name: Chenghao/Oem
- Certification: ROHS ISO9001 CE
- Model Number: CH500FW09A
- Minimum Order Quantity: 100 pcs
- Price: /
- Packaging Details: All the products are packed in right way to keep it safe. For small sizes of products we use tray + carton, For bigger sizes we use foam slot + carton. we also design packages according to customers' requirements
- Delivery Time: 7-15 working days
- Payment Terms: T/T
- Supply Ability: 300Kpcs/month



#### Product Specification

- Module Name: CH500FW09A
- Module Size: 5 Inch
- Resolution: 480\*(RGB)\*854
- Model Size (W\*H\*T)mm: 66.1\*120.4\*1.85
- Display Area (W\*H)mm: 61.56\*109.526
- Color: 16.7M
- Display Mode: Normally Black IPS, Transmissive
- Viewing: All
- Connection: Connector
- Pin Number: 45
- Highlight: 5in MIPI Lcd Display Module,  
ISO9001 IPS Lcd Display Module,  
480×854 Dot Matrix Tft Display



## Product Description

### 5 Inch Lcd Display Module 480\*854 Dot Matrix Tft Color Display With MIPI Interface

#### Product Parameter

Model Name	CH500FW09A
Model Size (W*H*T)mm	66.1*120.4*1.85
Display Area (W*H)mm	61.56*109.526
Color	16.7M
Display Mode	Normally Black IPS,Transmissive
Viewing	All
Connection	Connector
Pin number	45
Interface	MIPI

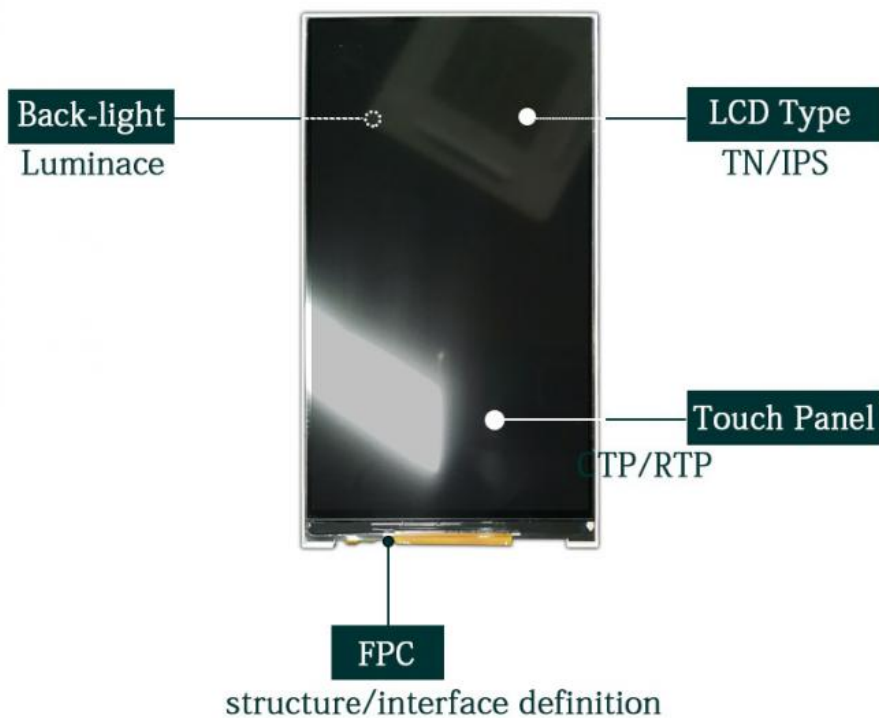
#### Company Strength:

- 1> ISO9001 certificated, Factory Direct Supplied
- 2> RoHS Compliant, Lead Free, Reach Compliant
- 3> Competitive Price and Short Lead-time
- 4> Professional Team with Rich Experiences in Design/Mfg/Quality Control
- 5> Small MOQ Support & Fast Response to Customers
- 6> Long Product Life Time

#### Product Customization

### Product Customization

The part marked in the figure below is the content that can be customized according to customer's request



#### About Customization:

all of our products can be with or without touch, whatever you choose. Backlight brightness and FPC interface can be customized according to your requirements.

## Product Description

ChengHao Display model CH500FW09A is a color active matrix thin film transistor (TFT) liquid crystal display (LCD) that uses amorphous silicon TFT as a switching device. This model is composed of a TFT LCD panel, a driving IC, a back-light and FPC.

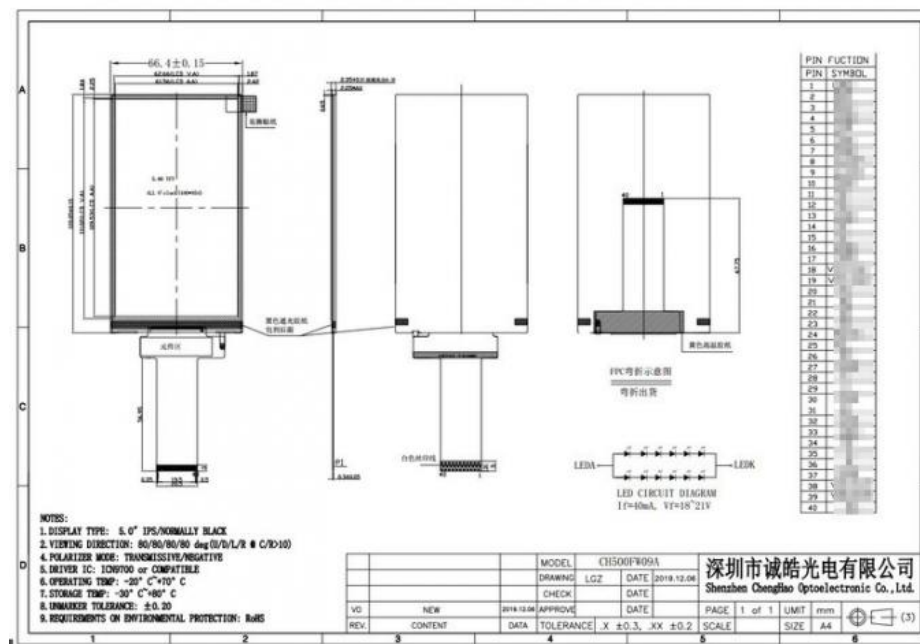
This TFT LCD has a 5.0 (vertical screen) inch diagonally measured active display area with 480\*3(RGB)\*854resolution.

The driver used for this project is the ICN9700 or compatible and can display 16M colors by R.G.B. signal input. The driver is mounted on the glass and the interconnection via FPC including components to drive the display module.

In addition, This module can be installed with a touch panel and FPC can also be customized according to customer requirements, such as modifying back-light and FPC structure, interface definition, etc.

RoHS Compliance & Halogen Free.

## Product Drawings



## Other Product

Module Type	Display Area	Display Mode
1.44 inch	25.50 * 26.50 mm	Normally White IPS, Transmissive
1.44 inch	25.50 * 26.50 mm	Normally White TN, Transmissive
1.50 inch	29.76 * 22.32 mm	Normally Black IPS, Transmissive
1.54 inch	27.72 * 27.72 mm	Normally Black IPS, Transmissive
1.54 inch	27.74 * 27.74 mm	Normally Black IPS, Transmissive
1.77 inch	28.03 * 35.04 mm	Normally White TN, Transmissive
1.80 inch	28.03 * 35.04 mm	Normally White TN, Transmissive
2.00 inch	30.60 * 40.80 mm	Normally White TN, Transmissive
2.10 inch	Circular display area	Normally White IPS, Transmissive
2.31 inch	46.75 * 35.06 mm	Normally White TN, Transmissive
2.40 inch	36.72 * 48.96 mm	Normally White TN, Transmissive
2.40 inch	36.72 * 48.96 mm	Normally White IPS, Transmissive
2.80 inch	43.20 * 57.60 mm	Normally White TN, Transmissive
2.80 inch	43.20 * 57.60 mm	Normally White IPS, Transmissive
3.00 inch	36.72 * 65.28 mm	Normally Black IPS, Transmissive
3.20 inch	48.60 * 64.80 mm	Normally White TN, Transmissive
3.50 inch	70.08 * 52.56 mm	Normally White TN, Transmissive
3.50 inch	70.08 * 52.56 mm	Normally Black IPS, Transmissive
4.00 inch	51.84 * 86.4 mm	Normally Black IPS, Transmissive

4.00 inch	71.86 * 70.18 mm	Normally Black IPS, Transmissive
4.30 inch	95.04 * 53.86 mm	Normally White TN, Transmissive
4.30 inch	95.04 * 53.86 mm	Normally Black IPS, Transmissive
5.00 inch	110.88 * 62.83 mm	Normally White TN, Transmissive
5.00 inch	108.00 * 64.8 0mm	Normally Black IPS, Transmissive
5.50 inch	68.04 * 120.96 mm	Normally Black IPS, Transmissive
6.00 inch	74.52 * 132.48 mm	Normally Black IPS, Transmissive
7.00 inch	154.08 * 85.92 mm	Normally White TN, Transmissive
7.00 inch	153.6 * 90 mm	Normally White TN, Transmissive
7.00 inch	154.21 mm * 85.92 mm	Normally Black IPS, Transmissive
8.00 inch	107.64 * 172.22 mm	Normally Black IPS, Transmissive
9.00 inch	196.61 * 114.15 mm	Normally White TN, Transmissive
10.1 inch	135.36 * 216.58 mm	Normally Black IPS, Transmissive



**Shenzhen ChengHao Optoelectronic Co., Ltd.**



+86 755-27806536



add@chenghaolcm.com



chenghaolcd.com

7th floor, building C5, Hengfeng Industrial City, Hangcheng street, Bao'an District, Shenzhen