

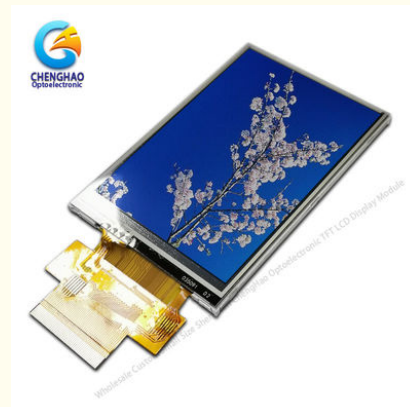


ISO9001 300cd/M2 Tft Lcd Panel Screen Thin Film SPI MCU ST7789V

Our Product Introduction

Basic Information

- Place of Origin: ShenZhen, China
- Brand Name: Chenghao/Oem
- Certification: ROHS ISO9001 CE
- Model Number: CH240QV52A-T
- Minimum Order Quantity: 100 pcs
- Price: /
- Packaging Details: All the products are packed in right way to keep it safe. For small sizes of products we use tray + carton, For bigger sizes we use foam slot + carton. we also design packages according to customers' requirements
- Delivery Time: 7-15 working days
- Payment Terms: T/T
- Supply Ability: 300Kpcs/month



Product Specification

- MODEL NO.: CH240QV52A-T
- Interface: SPI / MCU / SPI+RGB
- Luminance: 300cd/m2
- LCD Type: 2.4"
- Dot Arrangement: 240(RGB)×320
- Color Filter Array: RGB Vertical Stripe
- Display Mode: IPS/ Transmission/ NormallyBlack
- Viewing Direction: 80/80/80/80
- Highlight: 300cd/M2 Tft Lcd Panel Screen,
ISO9001 Tft Lcd Panel Screen,
ST7789V Ips Lcd Touch Panel



Product Description

2.4" Thin Film Transistor Display SPI / MCU / SPI+RGB Multi-Interface Thin Lcd Display

Product Parameter

ITEM	STANDARD VALUES
Interface	SPI,MCU,SPI+RGB
Luminance	300cd/m2
LCD type	2.4"TFT+ RTP
Dot arrangement	240(RGB)×320
Color filter array	RGB vertical stripe
Display mode	IPS/ Transmission/ NormallyBlack
Viewing Direction	80/80/80/80

Company Strength:

- 1> ISO9001 certificated, Factory Direct Supplied
- 2> RoHS Compliant, Lead Free, Reach Compliant
- 3> Competitive Price and Short Lead-time
- 4> Professional Team with Rich Experiences in Design/Mfg/Quality Control
- 5> Small MOQ Support & Fast Response to Customers
- 6> Long Product Life Time

Product Description

ChengHao Display model CH240QV52A-T is a color active matrix thin film transistor (TFT) liquid crystal display (LCD) that uses amorphous silicon TFT as a switching device. This model is composed of a TFT LCD panel, a driving circuit, a high brightness back-light, a resistive touch screen and FPC.

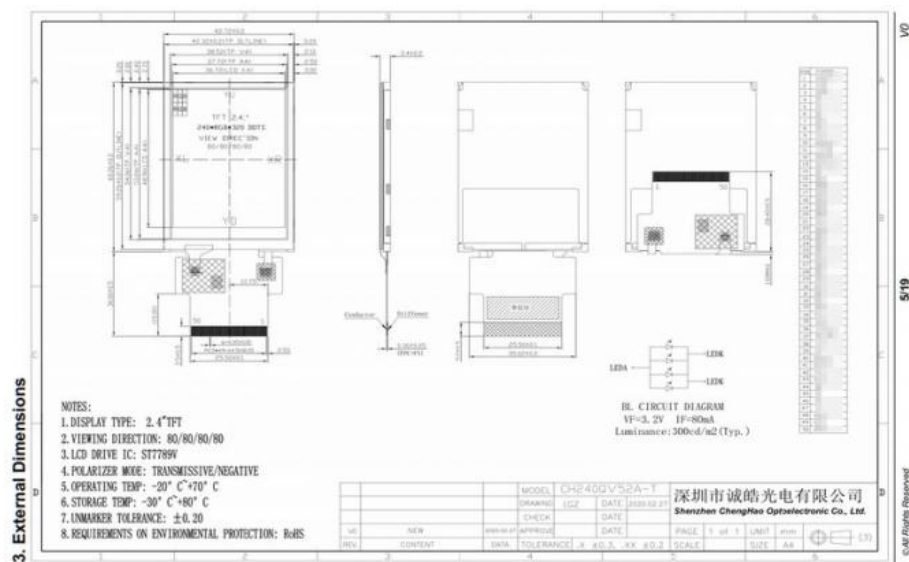
The TFT display is a color active matrix thin film transistor (TFT) liquid crystal display (LCD) that uses amorphous silicon TFT as a switching device. This TFT LCD has a 2.4 (3:4) inch diagonally measured active display area with QVGA (240 horizontal by 320 vertical pixel) resolution.

The driver used for this project is the Sitronix ST7789V or compatible and can display 262K colors by 18 bit R.G.B. signal input. The driver is mounted on the glass and the interconnection via FPC including components to drive the display module. Support SPI, MCU, SPI + RGB interface.

In addition, FPC can also be customized according to customer requirements, such as modifying FPC structure, interface definition, etc.

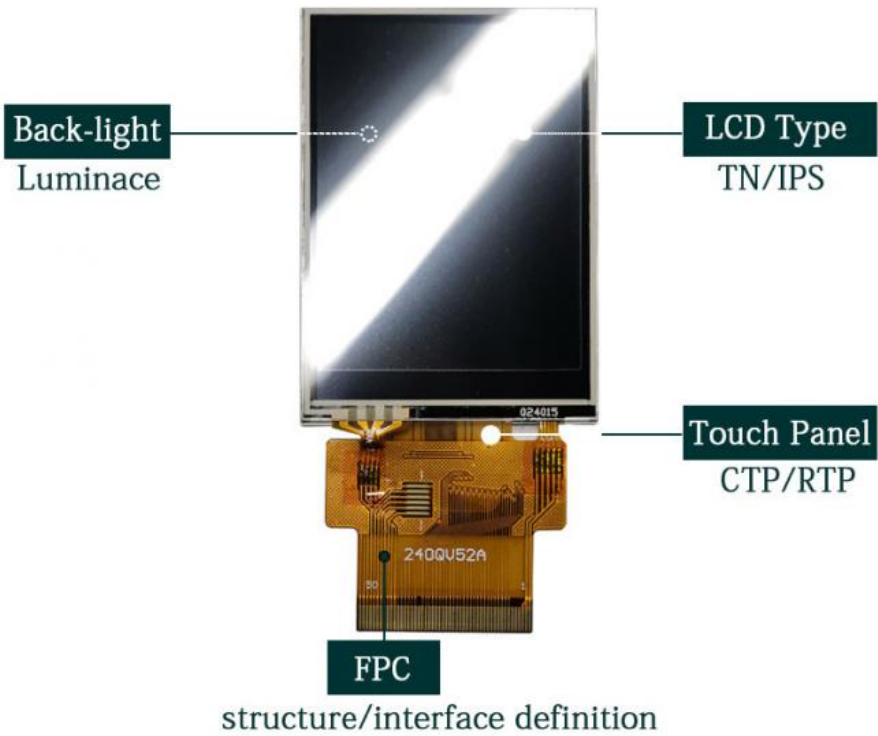
RoHS Compliance & Halogen Free.

Product Drawings



Product Customization

The part marked in the figure below is the content that can be customized according to customer's request



About Customization:

all of our products can be with or without touch, whatever you choose. Backlight brightness and FPC interface can be customized according to your requirements.

Other Product

Module Type	Display Area	Display Mode
1.44 inch	25.50 * 26.50 mm	Normally White IPS, Transmissive
1.44 inch	25.50 * 26.50 mm	Normally White TN, Transmissive
1.50 inch	29.76 * 22.32 mm	Normally Black IPS, Transmissive
1.54 inch	27.72 * 27.72 mm	Normally Black IPS, Transmissive
1.54 inch	27.74 * 27.74 mm	Normally Black IPS, Transmissive
1.77 inch	28.03 * 35.04 mm	Normally White TN, Transmissive
1.80 inch	28.03 * 35.04 mm	Normally White TN, Transmissive
2.00 inch	30.60 * 40.80 mm	Normally White TN, Transmissive
2.10 inch	Circular display area	Normally White IPS, Transmissive
2.31 inch	46.75 * 35.06 mm	Normally White TN, Transmissive
2.40 inch	36.72 * 48.96 mm	Normally White TN, Transmissive
2.40 inch	36.72 * 48.96 mm	Normally White IPS, Transmissive
2.80 inch	43.20 * 57.60 mm	Normally White TN, Transmissive
2.80 inch	43.20 * 57.60 mm	Normally White IPS, Transmissive
3.00 inch	36.72 * 65.28 mm	Normally Black IPS, Transmissive
3.20 inch	48.60 * 64.80 mm	Normally White TN, Transmissive
3.50 inch	70.08 * 52.56 mm	Normally White TN, Transmissive
3.50 inch	70.08 * 52.56 mm	Normally Black IPS, Transmissive
4.00 inch	51.84 * 86.4 mm	Normally Black IPS, Transmissive
4.00 inch	71.86 * 70.18 mm	Normally Black IPS, Transmissive
4.30 inch	95.04 * 53.86 mm	Normally White TN, Transmissive
4.30 inch	95.04 * 53.86 mm	Normally Black IPS, Transmissive
5.00 inch	110.88 * 62.83 mm	Normally White TN, Transmissive
5.00 inch	108.00 * 64.8 0mm	Normally Black IPS, Transmissive

5.50 inch	68.04 * 120.96 mm	Normally Black IPS, Transmissive
6.00 inch	74.52 * 132.48 mm	Normally Black IPS, Transmissive
7.00 inch	154.08 * 85.92 mm	Normally White TN, Transmissive
7.00 inch	153.6 * 90 mm	Normally White TN, Transmissive
7.00 inch	154.21 mm * 85.92 mm	Normally Black IPS, Transmissive
8.00 inch	107.64 * 172.22 mm	Normally Black IPS, Transmissive
9.00 inch	196.61 * 114.15 mm	Normally White TN, Transmissive
10.10 inch	135.36 * 216.58 mm	Normally Black IPS, Transmissive



Shenzhen ChengHao Optoelectronic Co., Ltd.



+86 755-27806536



add@chenghaolcm.com



chenghaolcd.com

7th floor, building C5, Hengfeng Industrial City, Hangcheng street, Bao'an District, Shenzhen