



8" 500nits High Brightness TFT Display 800x1280 IPS Transmissive Display

Our Product Introduction

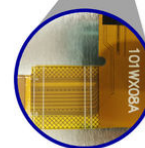
Basic Information

- Place of Origin: ShenZhen , China
- Brand Name: OEM
- Certification: ROHS ISO9001 CE
- Model Number: CH800FH03A
- Minimum Order Quantity: 100 pcs
- Price: /
- Packaging Details: All the products are packed in right way to keep it safe. For small sizes of products we use tray + carton, For bigger sizes we use foam slot + carton. we also design packages according to customers' requirements
- Delivery Time: 7 - 15 working days
- Payment Terms: T/T
- Supply Ability: 200K PCS / Month

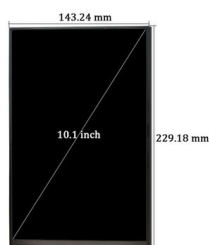


Product Specification

- LCD Type: 10" TFT
- Dot Arrangement: 800(RGB)×1280 Dots
- Display Mode: Transmissive / Normally Black
- Viewing Angle: 85 / 85 / 85 / 85
- IC: JD-9365BC
- TFT Size: 143.2 (W) × 229.2 (H)×2.8 (T) Mm
- Active Area: 135.36(W) × 216.576(H) Mm
- Highlight: 10.1" High Brightness TFT Display, 500nits High Brightness TFT Display, 800x1280 IPS Transmissive Display



More Images



Product Description

8" 500Nits High Brightness TFT Display 800x1280 Pixel And IPS Transmissive Normally Black Display Mode

Product Parameter

MODEL NO.	CH800FH03A
LCD type	8" TFT
Backlight Type	White LED
Dot arrangement	800(RGB)×1280dots
Color filter array	RGB vertical stripe
Display mode	Transmissive / Normally Black
Luminance	500cd/m2
Viewing Direction	85/85/85/85
Driver IC	JD9365BC
TFT size	143.24(W)×229.18(H)×2.75(T)mm
Active area	135.36(W)×216.576(H)mm

Product Description

ChengHao Display model CH800FH03A is a color active matrix thin film transistor (TFT) liquid crystal display (LCD) that uses amorphous silicon TFT as a switching device. This model is composed of a TFT LCD panel, a driving IC, a high brightness back-light and FPC.

This TFT LCD has a 8 (16:10) inch diagonally measured active display area with WXGA (800 horizontal by 1280 vertical pixel) resolution.

The driver used for this project is the JD9365BC and can display 16M colors by 24 bit R.G.B. signal input. The driver is mounted on the glass and the interconnection via FPC including components to drive the display module. Support RGB interface.

In addition, FPC can also be customized according to customer requirements, such as modifying back-light and FPC structure, interface definition, etc.

RoHS Compliance & Halogen Free.

For storage:

In the case of storing for a long period of time for instance, for years for the purpose or replacement use, the following ways are recommended.

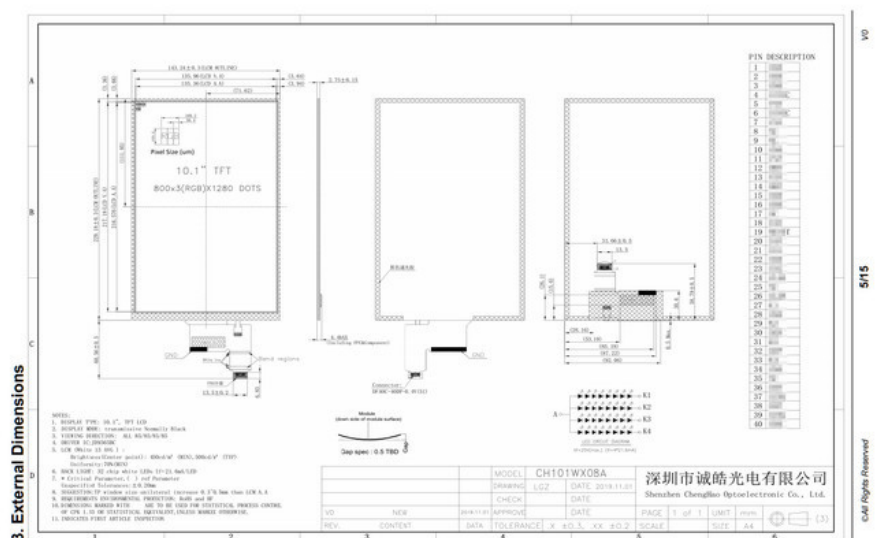
1.Storage in a polyethylene bag with the opening sealed so as not to enter fresh air outside in it. And with no desiccant.

2. Placing in a dark place where neither exposure to direct sunlight nor light's keeping the storage temperature range.

3.Storing with no touch on polarizer surface by the anything else.

It is recommended to store them as they have been contained in the inner container at the time of delivery from us

Product Drawings



Other Products

Module Type	Display Area	Display Mode
1.44 inch	25.50 * 26.50 mm	Normally White IPS, Transmissive
1.44 inch	25.50 * 26.50 mm	Normally White TN, Transmissive
1.50 inch	29.76 * 22.32 mm	Normally Black IPS, Transmissive
1.54 inch	27.72 * 27.72 mm	Normally Black IPS, Transmissive
1.54 inch	27.74 * 27.74 mm	Normally Black IPS, Transmissive
1.77 inch	28.03 * 35.04 mm	Normally White TN, Transmissive
1.80 inch	28.03 * 35.04 mm	Normally White TN, Transmissive
2.00 inch	30.60 * 40.80 mm	Normally White TN, Transmissive
2.10 inch	Circular display area	Normally White IPS, Transmissive
2.31 inch	46.75 * 35.06 mm	Normally White TN, Transmissive
2.40 inch	36.72 * 48.96 mm	Normally White TN, Transmissive
2.40 inch	36.72 * 48.96 mm	Normally White IPS, Transmissive
2.80 inch	43.20 * 57.60 mm	Normally White TN, Transmissive
2.80 inch	43.20 * 57.60 mm	Normally White IPS, Transmissive
3.00 inch	36.72 * 65.28 mm	Normally Black IPS, Transmissive
3.20 inch	48.60 * 64.80 mm	Normally White TN, Transmissive
3.50 inch	70.08 * 52.56 mm	Normally White TN, Transmissive
3.50 inch	70.08 * 52.56 mm	Normally Black IPS, Transmissive
4.00 inch	51.84 * 86.4 mm	Normally Black IPS, Transmissive
4.00 inch	71.86 * 70.18 mm	Normally Black IPS, Transmissive
4.30 inch	95.04 * 53.86 mm	Normally White TN, Transmissive
4.30 inch	95.04 * 53.86 mm	Normally Black IPS, Transmissive
5.00 inch	110.88 * 62.83 mm	Normally White TN, Transmissive
5.00 inch	108.00 * 64.80 mm	Normally Black IPS, Transmissive
5.50 inch	68.04 * 120.96 mm	Normally Black IPS, Transmissive
6.00 inch	74.52 * 132.48 mm	Normally Black IPS, Transmissive
7.00 inch	154.08 * 85.92 mm	Normally White TN, Transmissive
7.00 inch	153.6 * 90 mm	Normally White TN, Transmissive
7.00 inch	154.21 mm * 85.92 mm	Normally Black IPS, Transmissive
8.00 inch	107.64 * 172.22 mm	Normally Black IPS, Transmissive
9.00 inch	196.61 * 114.15 mm	Normally White TN, Transmissive
10.1 inch	135.36 * 216.58 mm	Normally Black IPS, Transmissive

[Go to Homepage](#)



Shenzhen Chenghao Optoelectronic Co., Ltd.



+86 755-27806536



add@chenghaolcm.com



chenghaolcd.com

7th floor, building C5, Hengfeng Industrial City, Hangcheng street, Bao'an District, Shenzhen

