



SPI Transmissive 2.1" IPS Industrial LCD Display 40 Pin 300nits

Our Product Introduction

Basic Information

- Place of Origin: ShenZhen, China
- Brand Name: OEM/ODM
- Certification: ROHS ISO9001 CE
- Model Number: CH210WV01A-4
- Minimum Order Quantity: 100 pcs
- Price: /
- Packaging Details: All the products are packed in right way to keep it safe. For small sizes of products we use tray + carton, For bigger sizes we use foam slot + carton. we also design packages according to customers' requirements
- Delivery Time: 7-15 working days
- Payment Terms: T/T
- Supply Ability: 50Kpcs/month



Product Specification

- Size: 2.1 Inches
- Dot Arrangement: 3*480*480-RGB
- Display Mode: IPS
- Module Size: 56.18(W)x59.71(H)
- Active Area: $\phi 53.28\text{M}$
- Luminance: 250~300nits
- Interface: SPI+RGB
- Highlight: SPI Transmissive Industrial LCD Display ,
2.1" IPS Industrial LCD Display ,
300nits 40 Pin LCD Display

Product Description

2.1" 40 Pin IPS Industrial LCD Display With Normally Black / Transmissive Display Mode

Product Parameter

MODEL NO.	CH210WV01A-4
Module type	2.1"TFT
Display Mode	IPS/Transmissive
Number of Dots	480x480x3-RGB
Viewing Direction	ALL
Module size	2.3(T)x56.18(W)x59.71(H) mm
TFT Active area	φ 53.28mm
Interface	SPI+RGB
Luminance	300Nits

Product Description

ChengHao Display model CH210WV01A-4 is a color active matrix thin film transistor (TFT) liquid crystal display (LCD) that uses amorphous silicon TFT as a switching device. This model is composed of a TFT LCD panel, a driving IC, a high brightness back-light, a cap-active touch panel and FPC.

This TFT LCD has a 2.1 (Circular Type) inch diagonally measured active display area with 480*480 Resolution.

The driving IC is the ST7701S and can display 16.7M colors by 3line SPI or R.G.B. signal input.

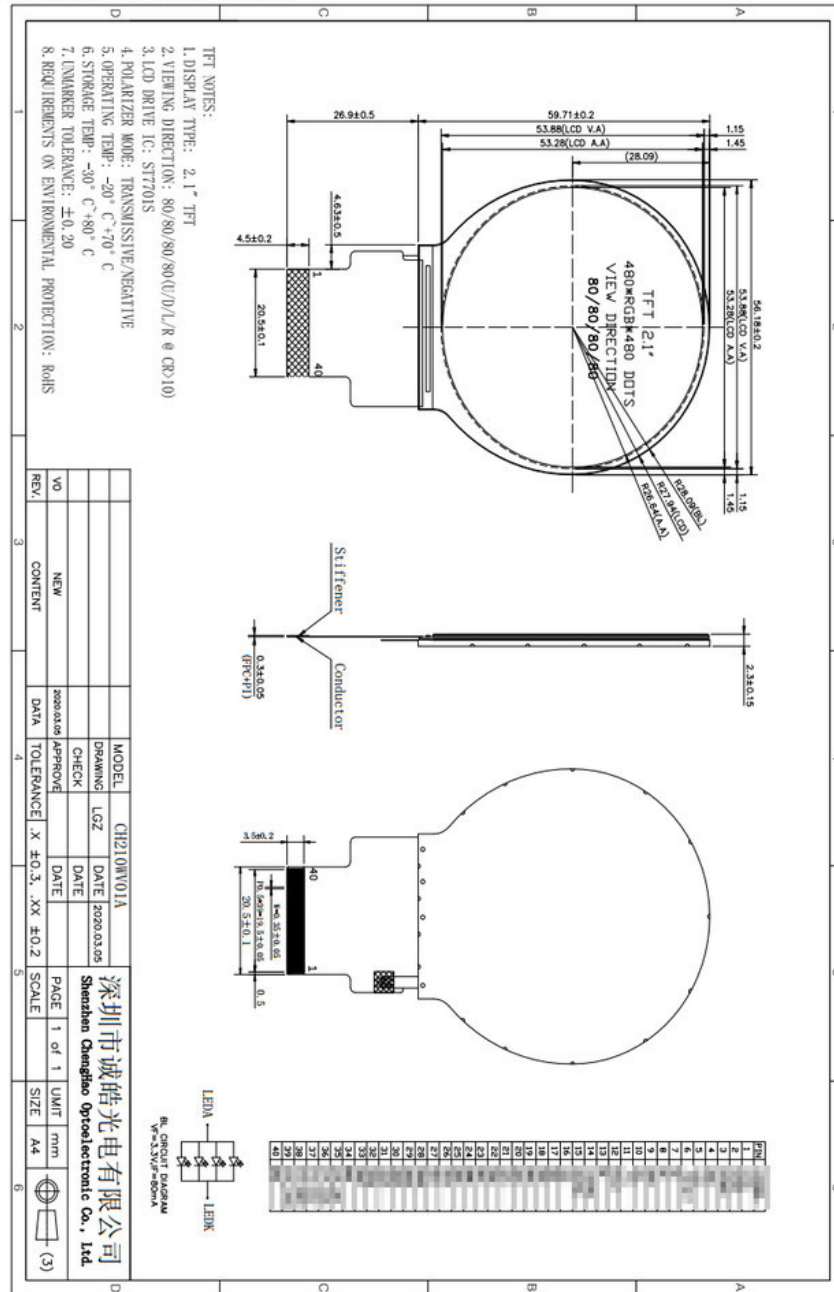
The driver is mounted on the glass and the interconnection via FPC including components to drive the display module. Support RGB interface.

In addition, FPC can also be customized according to customer requirements, such as modifying back-light and CTP structure, interface definition, etc.

RoHS Compliance & Halogen Free.

Product Drawings

3. External Dimensions



©All Rights Reserved

5/16

V0

Packaging & Shipping

Packaging Details:

1. All the products are packed in right way to keep it safe.
2. For small sizes of products we use tray + carton,
3. For bigger sizes we use foam slot + carton.
4. we also design packages according to customers' requirements

Other Products

Module Type	Display Area	Display Mode
1.44 inch	25.50 * 26.50 mm	Normally White IPS, Transmissive
1.44 inch	25.50 * 26.50 mm	Normally White TN, Transmissive
1.50 inch	29.76 * 22.32 mm	Normally Black IPS, Transmissive
1.54 inch	27.72 * 27.72 mm	Normally Black IPS, Transmissive
1.54 inch	27.74 * 27.74 mm	Normally Black IPS, Transmissive
1.77 inch	28.03 * 35.04 mm	Normally White TN, Transmissive
1.80 inch	28.03 * 35.04 mm	Normally White TN, Transmissive
2.00 inch	30.60 * 40.80 mm	Normally White TN, Transmissive

2.10 inch	Circular display area	Normally White IPS, Transmissive
2.31 inch	46.75 * 35.06 mm	Normally White TN, Transmissive
2.40 inch	36.72 * 48.96 mm	Normally White TN, Transmissive
2.40 inch	36.72 * 48.96 mm	Normally White IPS, Transmissive
2.80 inch	43.20 * 57.60 mm	Normally White TN, Transmissive
2.80 inch	43.20 * 57.60 mm	Normally White IPS, Transmissive
3.00 inch	36.72 * 65.28 mm	Normally Black IPS, Transmissive
3.20 inch	48.60 * 64.80 mm	Normally White TN, Transmissive
3.50 inch	70.08 * 52.56 mm	Normally White TN, Transmissive
3.50 inch	70.08 * 52.56 mm	Normally Black IPS, Transmissive
4.00 inch	51.84 * 86.4 mm	Normally Black IPS, Transmissive
4.00 inch	71.86 * 70.18 mm	Normally Black IPS, Transmissive
4.30 inch	95.04 * 53.86 mm	Normally White TN, Transmissive
4.30 inch	95.04 * 53.86 mm	Normally Black IPS, Transmissive
5.00 inch	110.88 * 62.83 mm	Normally White TN, Transmissive
5.00 inch	108.00 * 64.8 0mm	Normally Black IPS, Transmissive
5.50 inch	68.04 * 120.96 mm	Normally Black IPS, Transmissive
6.00 inch	74.52 * 132.48 mm	Normally Black IPS, Transmissive
7.00 inch	154.08 * 85.92 mm	Normally White TN, Transmissive
7.00 inch	153.6 * 90 mm	Normally White TN, Transmissive
7.00 inch	154.21 mm * 85.92 mm	Normally Black IPS, Transmissive
8.00 inch	107.64 * 172.22 mm	Normally Black IPS, Transmissive
9.00 inch	196.61 * 114.15 mm	Normally White TN, Transmissive
10.1 inch	135.36 * 216.58 mm	Normally Black IPS, Transmissive

[Go to Homepage](#) 



Shenzhen ChengHao Optoelectronic Co., Ltd.



+86 755-27806536



add@chenghaolcm.com



chenghaolcd.com

7th floor, building C5, Hengfeng Industrial City, Hangcheng street, Bao'an District, Shenzhen