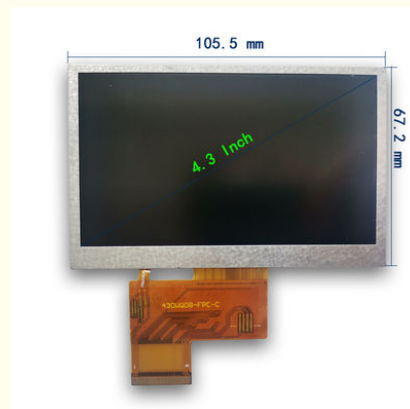




IPS Transmissive TFT LCD Display 20 Pin MIPI Interface 250nit 480*800

Basic Information

- Place of Origin: ShenZhen , China
- Brand Name: OEM
- Certification: ROHS ISO9001 CE
- Model Number: 430WQ08
- Minimum Order Quantity: 100 pcs
- Price: /
- Packaging Details: All the products are packed in right way to keep it safe. For small sizes of products we use tray + carton, For bigger sizes we use foam slot + carton. we also design packages according to customers' requirements
- Delivery Time: 7 - 15 working days
- Payment Terms: T/T
- Supply Ability: 200K PCS / Month



Product Specification

- Module Type: 4.3 Inch
- Display Mode: Normally Black IPS
- Viewing Direction: Free Perspective
- Module Size: 105.5 * 67.2 * 6.8 Mm
- TFT Active Area: 95.04 * 53.86 Mm
- Color: 65k / 262k / 16.7M
- Luminance: 250nit
- Interface: MIPI/Custom
- Highlight: IPS Transmissive TFT LCD Display ,
MIPI Interface TFT LCD Display ,
250nit Lcd Display Module



Product Description

4.3" 480*800 Color TFT LCD Display Normally Black IPS Transmissive 20Pin MIPI Interface

Product Parameter

MODEL NO.	CH430WQ08
Module type	105 * 67 *6 mm
Display Mode	Normally Black IPS
Number of Dots	480 *272 * 3
Viewing Direction	ALL
Pin Number	20
Module size	105 * 67 *6 mm
TFT Active area	95 * 53
Interface	RGB / Custom
Luminance	250 nit

Product Description

ChengHao Display model 430WQ08 is a color active matrix thin film transistor (TFT) liquid crystal display (LCD) that uses amorphous silicon TFT as a switching device. This model is composed of a TFT LCD panel, a driving IC, a high brightness back-light and FPC.

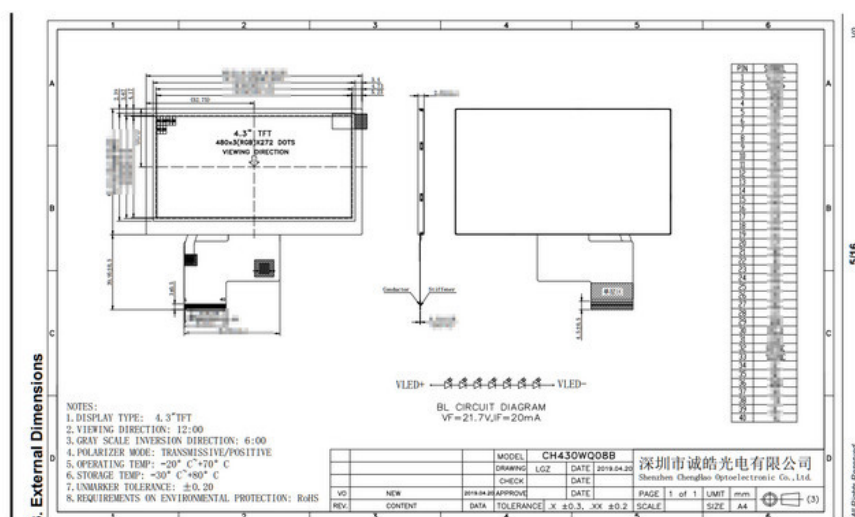
This TFT LCD has a 4.3 (16:9) inch diagonally measured active display area with WQVGA (480 horizontal by 272 vertical pixel) resolution.

The driver used for this project is the ST7282 or compatible and can display 16M colors by 24 bit R.G.B. signal input. The driver is mounted on the glass and the interconnection via FPC including components to drive the display module. Support RGB interface.

In addition, FPC can also be customized according to customer requirements, such as modifying backlight and FPC structure, interface definition, etc.

RoHS Compliance & Halogen Free.

Product Drawings



Other Products

Module Type	Display Area	Display Mode
1.44 inch	25.50 * 26.50 mm	Normally White IPS, Transmissive
1.44 inch	25.50 * 26.50 mm	Normally White TN, Transmissive
1.50 inch	29.76 * 22.32 mm	Normally Black IPS, Transmissive
1.54 inch	27.72 * 27.72 mm	Normally Black IPS, Transmissive
1.54 inch	27.74 * 27.74 mm	Normally Black IPS, Transmissive
1.77 inch	28.03 * 35.04 mm	Normally White TN, Transmissive
1.80 inch	28.03 * 35.04 mm	Normally White TN, Transmissive
2.00 inch	30.60 * 40.80 mm	Normally White TN, Transmissive
2.10 inch	Circular display area	Normally White IPS, Transmissive
2.31 inch	46.75 * 35.06 mm	Normally White TN, Transmissive
2.40 inch	36.72 * 48.96 mm	Normally White TN, Transmissive

2.40 inch	36.72 * 48.96 mm	Normally White IPS, Transmissive
2.80 inch	43.20 * 57.60 mm	Normally White TN, Transmissive
2.80 inch	43.20 * 57.60 mm	Normally White IPS, Transmissive
3.00 inch	36.72 * 65.28 mm	Normally Black IPS, Transmissive
3.20 inch	48.60 * 64.80 mm	Normally White TN, Transmissive
3.50 inch	70.08 * 52.56 mm	Normally White TN, Transmissive
3.50 inch	70.08 * 52.56 mm	Normally Black IPS, Transmissive
4.00 inch	51.84 * 86.4 mm	Normally Black IPS, Transmissive
4.00 inch	71.86 * 70.18 mm	Normally Black IPS, Transmissive
4.30 inch	95.04 * 53.86 mm	Normally White TN, Transmissive
4.30 inch	95.04 * 53.86 mm	Normally Black IPS, Transmissive
5.00 inch	110.88 * 62.83 mm	Normally White TN, Transmissive
5.00 inch	108.00 * 64.80 mm	Normally Black IPS, Transmissive
5.50 inch	68.04 * 120.96 mm	Normally Black IPS, Transmissive
6.00 inch	74.52 * 132.48 mm	Normally Black IPS, Transmissive
7.00 inch	154.08 * 85.92 mm	Normally White TN, Transmissive
7.00 inch	153.6 * 90 mm	Normally White TN, Transmissive
7.00 inch	154.21 mm * 85.92 mm	Normally Black IPS, Transmissive
8.00 inch	107.64 * 172.22 mm	Normally Black IPS, Transmissive
9.00 inch	196.61 * 114.15 mm	Normally White TN, Transmissive
10.1 inch	135.36 * 216.58 mm	Normally Black IPS, Transmissive

[Go to Homepage](#) 



Shenzhen ChengHao Optoelectronic Co., Ltd.



+86 755-27806536



add@chenghaolcm.com



chenghaolcd.com

7th floor, building C5, Hengfeng Industrial City, Hangcheng street, Bao'an District, Shenzhen