



## SPI 3.5 Inch Transmissive Lcd Touch Screen 6 8 9 16 17 Bits

### Our Product Introduction

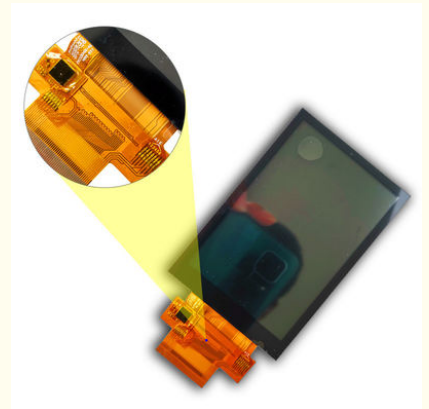
#### Basic Information

- Place of Origin: ShenZhen, China
- Brand Name: 3.5 Inch
- Certification: ROHS ISO9001 CE
- Model Number: CH350HV37A-CT
- Minimum Order Quantity: 100 pcs
- Price: /
- Packaging Details: All the products are packed in right way to keep it safe. For small sizes of products we use tray + carton, For bigger sizes we use foam slot + carton. we also design packages according to customers' requirements
- Delivery Time: 7-15 working days
- Payment Terms: T/T
- Supply Ability: 200Kpcs/month



#### Product Specification

- Size: 3.5 Inch
- Display Mode: TN / Transmissive / Normally White
- CTP Type: P + G
- Number Of Dots: 320\*3(RGB)\*480
- Viewing Direction: 6 O'clock
- Module Size: 56.54(W)\*84.96(H)\*3.97(T)mm
- Interface: TFT: SPI MCU SPI+RGB / CTP I2C
- Luminance: 300cd/m2
- Highlight: SPI Transmissive Lcd Touch Screen,  
3.5 Inch Transmissive Lcd Touch Screen,  
17 Bits Lcd Capacitive Touchscreen



#### More Images



## Product Description

### 3.5 Inch Transmissive 6 O'Clock Small Lcd Touch Screen 6bits 8bits 9Bits 16Bits 17Bits

#### Product Description

MODEL NO.	CH350HV37A-CT
Module type	3.5"TFT + CTP
Display Mode	TN/Transmissive/Normally white
CTP type	P+G
Number of Dots	320*3(RGB)*480
Viewing Direction	6 o'clock
Module size	56.54(W)*84.96(H)*3.97(T)mm
TFT Active area	48.96(W)*73.44(H)mm
Interface	TFT: SPI,MCU,SPI+RGB CTP:I2C
Luminance	300cd/m2

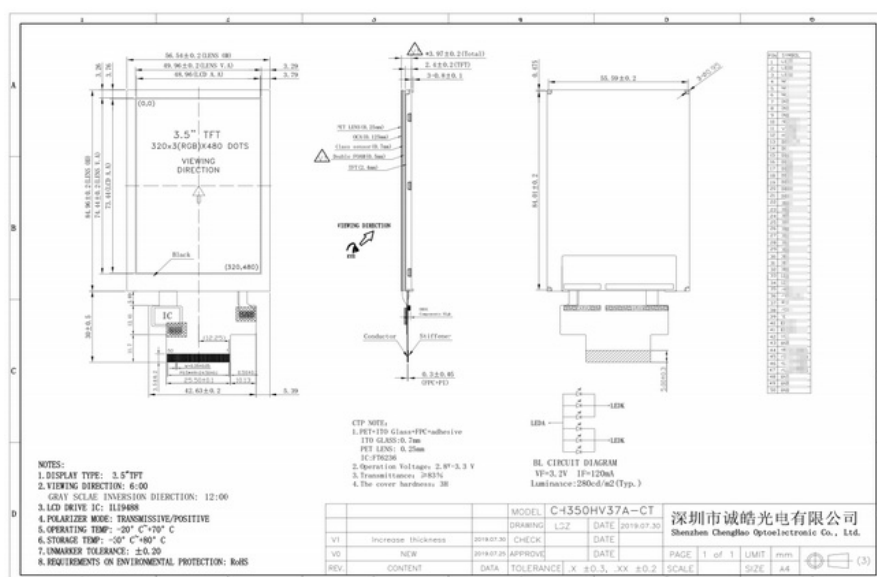
ChengHao Display model CH350HV37A-CT is a color active matrix thin film transistor (TFT) liquid crystal display (LCD) that uses amorphous silicon TFT as a switching device. This model is composed of a TFT LCD panel, a driving circuit, a high brightness back-light, a capacitive touch screen and FPC.

The TFT display is a color active matrix thin film transistor (TFT) liquid crystal display (LCD) that uses amorphous silicon TFT as a switching device. This TFT LCD has a 3.5 (3:2) inch diagonally measured active display area with HVGA (320 horizontal by 480 vertical pixel) resolution.

The driver used for this project is the ILITEK ILI9488 or compatible and can display 262K colors by 18 bit R.G.B. signal input. The driver is mounted on the glass and the interconnection via FPC including components to drive the display module. Support SPI, MCU, SPI + RGB interface.

In addition, FPC can also be customized according to customer requirements, such as modifying FPC and LENS structure, interface definition, etc.  
RoHS Compliance & Halogen Free.

## Product Drawings



## Why Choose Us

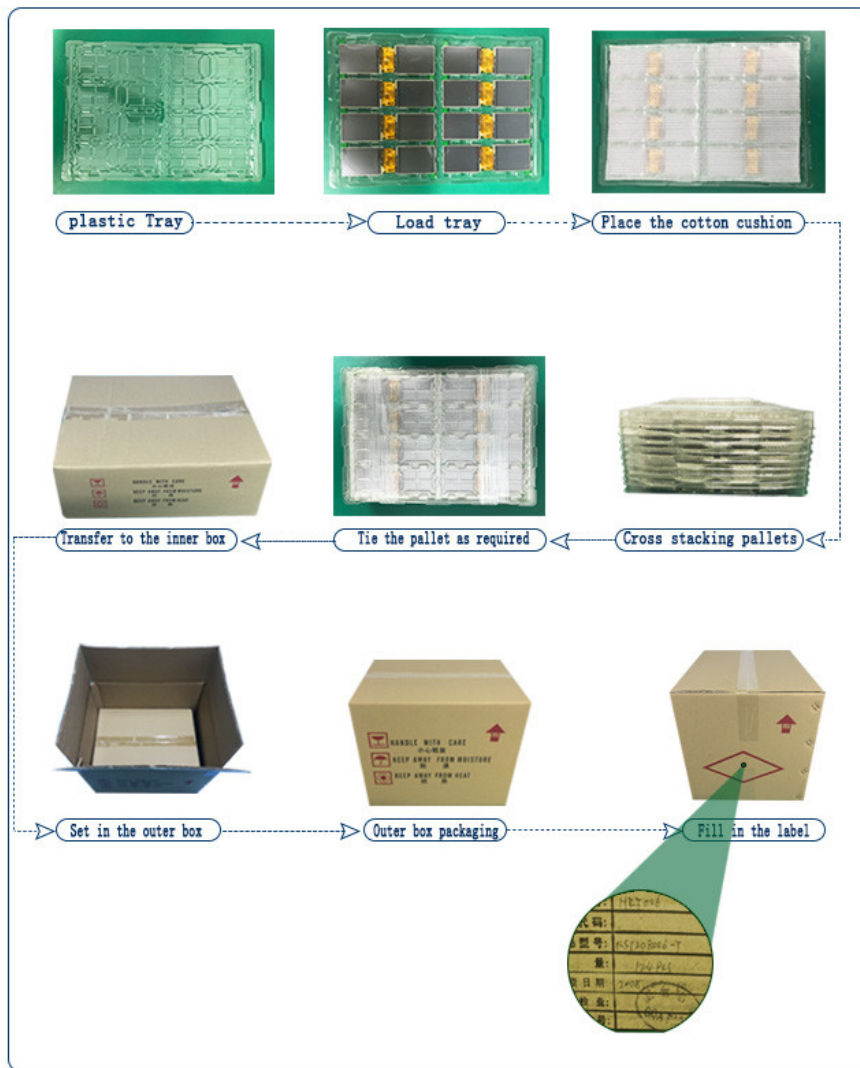
1. We are a professional designer manufacturer of LCD module and capacitive touch module.
2. We have all products through aging, high and low temperature test, to ensure the stability of products.
3. We are good at ODM and OEM, product specification, LOGO and packaging can be customized.

4. We are good at the development of display module in the industrial field and provide the total solution of capacitive screen.
5. We have 3 production lines, with shipment of more than 1,000,000 pieces per year.
6. Our products can support long-term supply, Maximum supply cycle is 6 years.
7. We combine touch screen technology with LCD display module, which greatly saves your cost. Perfect after-sales service will be one of the reasons why you choose us.

## Other Products

Module Type	Display Area	Display Mode
1.44 inch TFT LCD Display	25.50 * 26.50 mm	Normally White IPS, Transmissive
1.44 inch TFT LCD Display	25.50 * 26.50 mm	Normally White TN, Transmissive
1.50 inch TFT LCD Display	29.76 * 22.32 mm	Normally Black IPS, Transmissive
1.54 inch TFT LCD Display	27.72 * 27.72 mm	Normally Black IPS, Transmissive
1.54 inch TFT LCD Display	27.74 * 27.74 mm	Normally Black IPS, Transmissive
1.77 inch TFT LCD Display	28.03 * 35.04 mm	Normally White TN, Transmissive
1.80 inch TFT LCD Display	28.03 * 35.04 mm	Normally White TN, Transmissive
2.00 inch TFT LCD Display	30.60 * 40.80 mm	Normally White TN, Transmissive
2.10 inch TFT LCD Display	Circular display area	Normally White IPS, Transmissive
2.31 inch TFT LCD Display	46.75 * 35.06 mm	Normally White TN, Transmissive
2.40 inch TFT LCD Display	36.72 * 48.96 mm	Normally White TN, Transmissive
2.40 inch TFT LCD Display	36.72 * 48.96 mm	Normally White IPS, Transmissive
2.80 inch TFT LCD Display	43.20 * 57.60 mm	Normally White TN, Transmissive
2.80 inch TFT LCD Display	43.20 * 57.60 mm	Normally White IPS, Transmissive
3.00 inch TFT LCD Display	36.72 * 65.28 mm	Normally Black IPS, Transmissive
3.20 inch TFT LCD Display	48.60 * 64.80 mm	Normally White TN, Transmissive
3.50 inch TFT LCD Display	70.08 * 52.56 mm	Normally White TN, Transmissive
3.50 inch TFT LCD Display	70.08 * 52.56 mm	Normally Black IPS, Transmissive
4.00 inch TFT LCD Display	51.84 * 86.4 mm	Normally Black IPS, Transmissive
4.00 inch TFT LCD Display	71.86 * 70.18 mm	Normally Black IPS, Transmissive
4.30 inch TFT LCD Display	95.04 * 53.86 mm	Normally White TN, Transmissive
4.30 inch TFT LCD Display	95.04 * 53.86 mm	Normally Black IPS, Transmissive
5.00 inch TFT LCD Display	110.88 * 62.83 mm	Normally White TN, Transmissive
5.00 inch TFT LCD Display	108.00 * 64.80 mm	Normally Black IPS, Transmissive
5.50 inch TFT LCD Display	68.04 * 120.96 mm	Normally Black IPS, Transmissive
6.00 inch TFT LCD Display	74.52 * 132.48 mm	Normally Black IPS, Transmissive
7.00 inch TFT LCD Display	154.08 * 85.92 mm	Normally White TN, Transmissive
7.00 inch TFT LCD Display	153.6 * 90 mm	Normally White TN, Transmissive
7.00 inch TFT LCD Display	154.21 mm * 85.92 mm	Normally Black IPS, Transmissive
8.00 inch TFT LCD Display	107.64 * 172.22 mm	Normally Black IPS, Transmissive
9.00 inch TFT LCD Display	196.61 * 114.15 mm	Normally White TN, Transmissive
10.10 inch TFT LCD Display	135.36 * 216.58 mm	Normally Black IPS, Transmissive

## Product Packaging



## Express Shipping



**Shenzhen Chenghao Optoelectronic Co.,Ltd**

Mobile Phone :+86-775-27806536

WeChat/Whatsapp :Tina +15919862398

Skype : add@chenghaolcm.com

Email:add@chenghaolcm.com

[Go to Homepage](#)



**Shenzhen ChengHao Optoelectronic Co., Ltd.**



+86 755-27806536



add@chenghaolcm.com



chenghaolcd.com

7th floor, building C5, Hengfeng Industrial City, Hangcheng street, Bao'an District, Shenzhen