

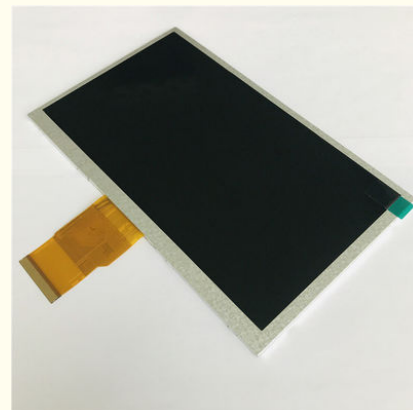


## 7 Inch 600cd Transmissive Industrial Touch Screen Panel 24 Bit RGB Interface

### Our Product Introduction

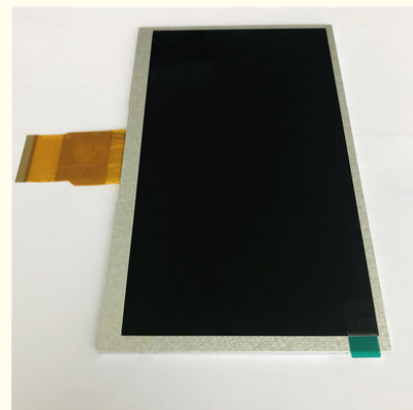
#### Basic Information

- Place of Origin: ShenZhen, China
- Brand Name: 7 Inch TFT
- Certification: ROHS ISO9001 CE
- Model Number: CH700WS10B
- Minimum Order Quantity: 100 pcs
- Price: /
- Packaging Details: All the products are packed in right way to keep it safe. For small sizes of products we use tray + carton, For bigger sizes we use foam slot + carton. we also design packages according to customers' requirements
- Delivery Time: 7-15 working days
- Payment Terms: T/T
- Supply Ability: 100Kpcs/month

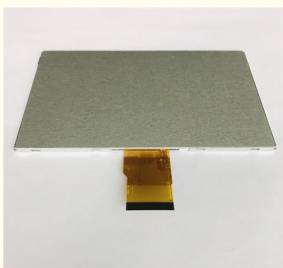


#### Product Specification

- Size: 7.0 INCH
- Number Of Dots: 1024X3(RGB)X600
- Display Mode: IPS, Normally Black
- Interface: 24bit RGB
- Module Size: 164.9(W)\*100.0(H)\*3.5(T)
- TFT Active Area: 154.2144(W)\*85.92(H)
- TFT Dot Pitch: 0.1506(W)\*0.1432(H)
- Luminance: 600,cd/m2
- Highlight: Transmissive Industrial Touch Screen Panel, 600cd Industrial Touch Screen Panel, 24 Bit RGB 7 Inch TFT Display



#### More Images



## Product Description

### 7 Inch 600cd Transmissive Industrial Touch Screen Panel 24 Bit RGB Interface

### 7 Inch Tft Lcd Screen TFT LCD Screen 1024\*3(RGB)\*600 Resolution 600cd/M2

Custom design solutions

- \* We support both standard and customized products and can put your logo on the products.
- \* Our experienced R and D team will support technical questions.

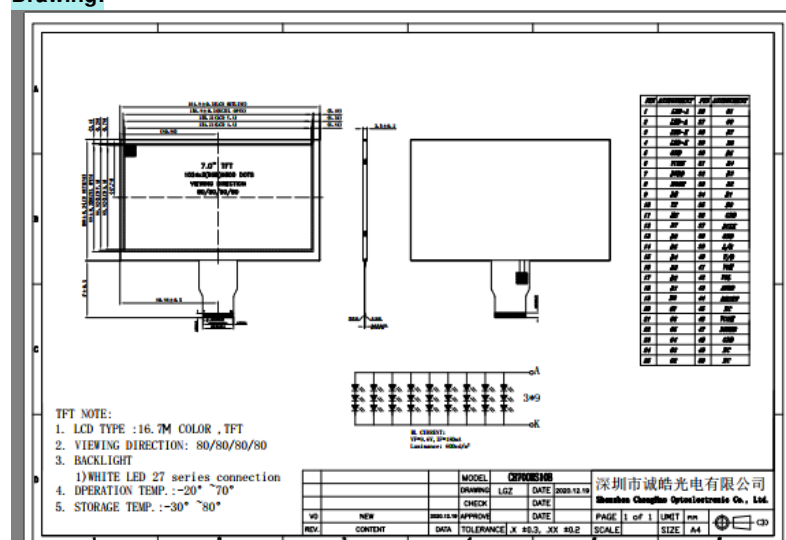
Our advantages

- \* Prompt reply within 12 hours
- \* Products with top quality
- \* More than 5 years of experience in LCD R and D and manufacturing
- \* Strong R & D team supports customized projects
- \* Fabulous after-sale service

#### Specification:

|                   |                                     |
|-------------------|-------------------------------------|
| MODEL NO.         | CH700WS10B                          |
| Module type       | 7" TFT                              |
| Display Mode      | IPS / Transmissive / Normally Black |
| Number of Dots    | 1024*3(RGB)*600                     |
| Viewing Direction | 80/80/80/80                         |
| Module size       | 164.9(W)*100.0(H)*3.5(T)mm          |
| TFT Active area   | 154.2144(W)*85.92(H)mm              |
| TFT Dot pitch     | 0.1506(W)*0.1432(H)mm               |
| Interface         | 24bit RGB interface                 |
| Backlight Type    | White LED                           |
| Luminance         | 600cd/m2                            |

#### Drawing:



#### Shipping Details:

For small quantity orders: we ship by UPS Air-Express, or DHL/FEDEX/TNT/ EMS Express service, it is safe and fast.

#### Packaging & Shipping:

Packaging Details:

1. All the products are packed in right way to keep it safe.
2. For small sizes of products we use tray + carton,
3. For bigger sizes we use foam slot + carton.
4. we also design packages according to customers' requirements

#### Our services:

##### 1. Why choose ChengHao Optoelectronic?

High Service Quality: OEM & ODM service; Reply in 24 hours; All of our products are up to the international quality standards

High Product Quality: Our well equipment and strict function testing in the productive process guarantee the excellent quality of each product.

Professional Manufacturer: household appliances, industrial control, medical equipment, POS machine, instruments and meters, GPS navigation, financial equipment, consumer equipment, information appliances.

##### 2. Could I order one piece for sample to test the quality?

Yes, We recommend checking the sample before order. You could order the sample before your order.

##### 3. May I have your catalogue and price list for trial order in MOQ quantity?

All our products are displayed on Google platform. Please take a closer look and choose the model you are interested in on our website.

##### 4. If I order big quantity, what's the good price?

Please send the details enquiry to us, such as the item number, quantity for each item, quality request, Logo, payment terms, transport method, discharge place etc. We will make the accurate quotation to you as soon as possible.

**5. What are my payment options?**

For samples and small account, it is 100% in advance.

For mass production, it is 30% in advance and 70% balance.

Welcome West Union, TT. bank account and Paypal.

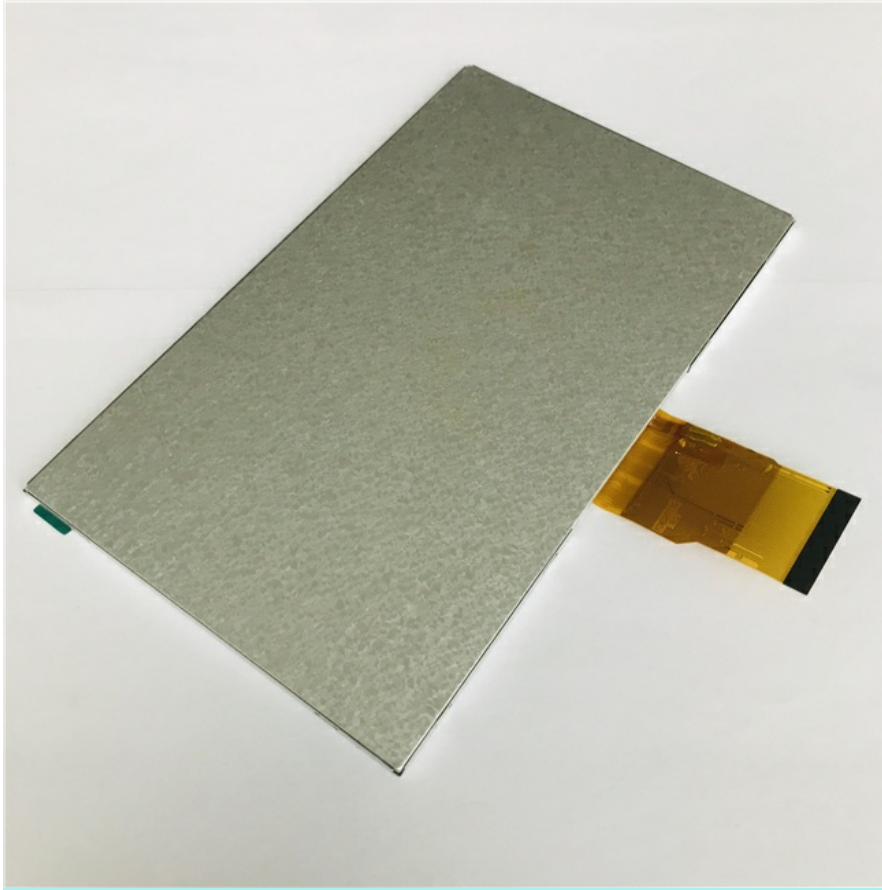
**6. How long will it take to ship my order?**

As long as there is stock available, ChengHao Optoelectronic usually ships items in 1 to 3 working days for samples and within 7 to 15 days for customized order once receiving the confirmation of a new order. The order will not be confirmed until the payment reaches ChengHao Optoelectronic bank account. If we are temporarily out of stock, we will do our best to inform you of the estimated lead time.

**7. What does your warranty cover?**

ChengHao Optoelectronic product is backed by a 1-year limited warranty against manufacturing defects (material or workmanship). Missing/lost or worn out parts are not covered under our warranty.

**Backside:**



**Shenzhen ChengHao Optoelectronic Co., Ltd.**



+86 755-27806536



add@chenghaolcm.com



chenghaolcd.com

7th floor, building C5, Hengfeng Industrial City, Hangcheng street, Bao'an District, Shenzhen