

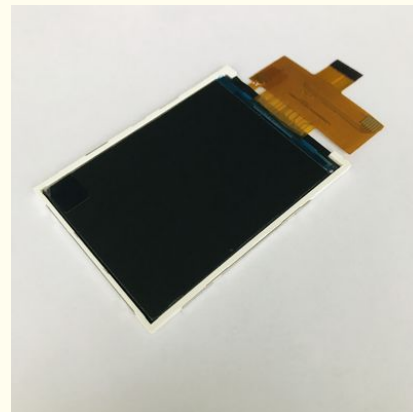


2.8 Inch Driver IC ST7789V Industrial LCD Display TN Viewing

Our Product Introduction

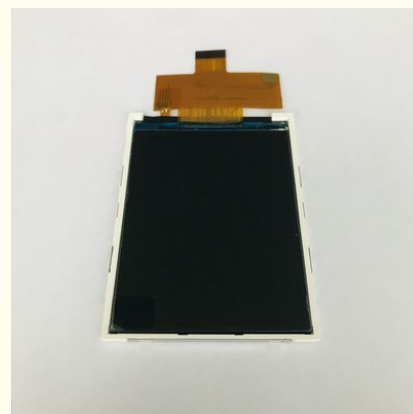
Basic Information

- Place of Origin: ShenZhen, China
- Brand Name: 2.8 Inch
- Certification: ROHS ISO9001 CE
- Model Number: CH280QV31A
- Minimum Order Quantity: 100 pcs
- Price: /
- Packaging Details: All the products are packed in right way to keep it safe. For small sizes of products we use tray + carton, For bigger sizes we use foam slot + carton. we also design packages according to customers' requirements
- Delivery Time: 7-15 working days
- Payment Terms: T/T
- Supply Ability: 200Kpcs/month

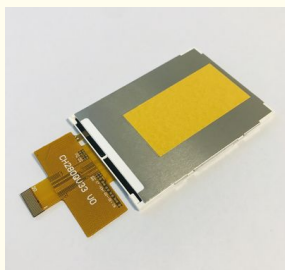


Product Specification

- Size: 2.8 Inch Tft Lcd Display
- Dot Arrangement: 240*3(RGB)*320 Resolution
- Display Mode: TN View~
- Module Size: 50.0(W)X69.2(H)X2.35(T)
- Active Area: 43.2(W)X57.6(H)
- Interface: 16-bit 8080-series System~
- TFT Dot Pitch: 0.18(W)X0.18(H)
- Viewing Direction: 6 O'clock~~
- Gray Scale Inversion Direction: 12 O'clock~~
- Driver IC: ST7789V~
- Highlight: ST7789V Industrial LCD Display,
2.8inch Industrial LCD Display,
ST7789V LCD Display Panel



More Images



Product Description

2.8 Inch Driver IC ST7789V Industrial LCD Display TN Viewing

2.8 Inch TFT LCD Screen TN Viewing Driver IC ST7789V Tft Lcd Display

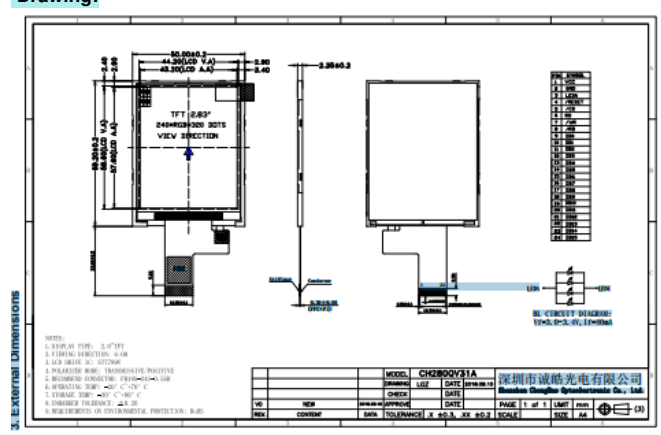
We mainly sell Industrial LCD panels with the following size: 0.96" , 1.44" , 2.0" , 2.4" , 2.8" , 3.5" , 4.0" , 4.3" , 5.5" , 7.0" 8.0" 9.0" 10.1" TFT LCD Panel, Most of them are original factory sealed carton packing.

Shen zhen Chenghao Optoelectronics Co., Ltd was established in 2016, We have been specialised in industrial lcd panel in china over 5years. we keep long-term and tight relationships with different LCD manufacturers all over the world.

Details for product:

MODEL NO.	CH280QV31A
Module type	2.8"TFT
Display Mode	TN/Transmissive/Normally white
Number of Dots	240*3(RGB)*320
Viewing Direction	6 o'clock
Gray Scale Inversion Direction	12 o'clock
Module size	50.0(W)*69.2(H)*2.35(T)mm
TFT Active area	43.2(W)*57.6(H)mm
TFT Dot pitch	0.18(W)*0.18(H)mm
Interface	16-bit 8080-series system interface
Backlight Type	White LED

Drawing:



Product Application:

Chenghao Optoelectronics can provide one-stop color TFT module solutions for various shapes, and can change FPC, pin definition, driver and motherboard according to customers' requirements. High voltage or low voltage can be achieved, the working temperature can be achieved ultra-wide temperature up to -40°C-90°C, the viewing angle can be achieved from 6:00 O'clock to full IPS.

Packaging & Shipping:

Packaging Details:

1. All the products are packed in right way to keep it safe.
2. For small sizes of products we use tray + carton,
3. For bigger sizes we use foam slot + carton.
4. we also design packages according to customers' requirements

Shipping Details:

For small quantity orders: we ship by UPS Air-Express, or DHL/FEDEX/TNT/ EMS Express service, it is safe and fast.

Our services:

1. Why choose ChengHao Optoelectronic?

High Service Quality: OEM & ODM service; Reply in 24 hours; All of our products are up to the international quality standards

High Product Quality: Our well equipment and strict function testing in the productive process guarantee the excellent quality of each product.

Professional Manufacturer: household appliances, industrial control, medical equipment, POS machine, instruments and meters, GPS navigation, financial equipment, consumer equipment, information appliances.

2. Could I order one piece for sample to test the quality?

Yes, We recommend checking the sample before order. You could order the sample before your order.

3. May I have your catalogue and price list for trial order in MOQ quantity?

All our products are displayed on Google platform. Please take a closer look and choose the model you are interested in on our website.

4. If I order big quantity, what's the good price?

Please send the details enquiry to us, such as the item number, quantity for each item, quality request, Logo, payment terms, transport method, discharge place etc. We will make the accurate quotation to you as soon as possible.

5. What are my payment options?

For samples and small account, it is 100% in advance.

For mass production, it is 30% in advance and 70% balance.

Welcome West Union, TT. bank account and Paypal.

6. How long will it take to ship my order?

As long as there is stock available, ChengHao Optoelectronic usually ships items in 1 to 3 working days for samples and within 7 to 15 days for customized order once receiving the confirmation of a new order. The order will not be confirmed until the payment reaches ChengHao Optoelectronic bank account. If we are temporarily out of stock, we will do our best to inform you of the estimated lead time.

7. What does your warranty cover?

ChengHao Optoelectronic product is backed by a 1-year limited warranty against manufacturing defects (material or workmanship). Missing/lost or worn out parts are not covered under our warranty.



Shenzhen ChengHao Optoelectronic Co., Ltd.



+86 755-27806536



add@chenghaolcm.com



chenghaolcd.com

7th floor, building C5, Hengfeng Industrial City, Hangcheng street, Bao'an District, Shenzhen