



## LED Backlight 262K 3.5 Inch TFT LCD Touch Screen IC ILI9488V

### Our Product Introduction

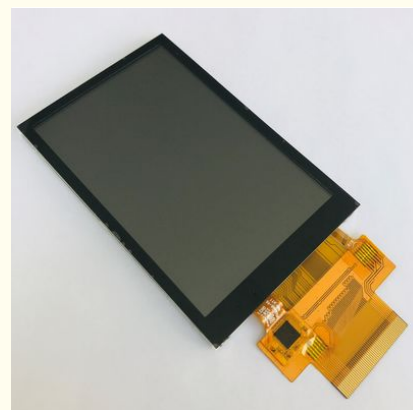
#### Basic Information

- Place of Origin: ShenZhen, China
- Brand Name: 3.5 Inch lcd
- Certification: ROHS ISO9001 CE
- Model Number: CH350HV37A-CT
- Minimum Order Quantity: 100 pcs
- Price: /
- Packaging Details: All the products are packed in right way to keep it safe. For small sizes of products we use tray + carton, For bigger sizes we use foam slot + carton. we also design packages according to customers' requirements
- Delivery Time: 7-15 working days
- Payment Terms: T/T
- Supply Ability: 200Kpcs/month

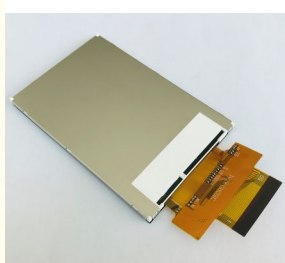


#### Product Specification

- Size: 3.5 Inch TFT
- Dot Arrangement: 320(RGB)×480
- Display Mode: TN
- Display Colors: 65/262K
- Module Size: 56.54(W)\*84.96(H)\*3.97(T)
- TFT Active Area: 48.96(W)\*73.44(H)
- CTP Active Area: 48.96(W)\*73.44(H) M
- Interface: 4-lines\_8bit / 3-lines\_9bit SPI 8-/9-/16-/18-bit 8080 System Interface 16-/18-bit RGB Interface
- Operating Temperature: -20 + 70
- Storage Temperature: -30 + 80
- Highlight: 262K 3.5 Inch TFT LCD Touch Screen ,  
65K TFT LCD Touch Screen ,  
262K 3.5 Inch Touch Screen



#### More Images



## Product Description

### 320x480 IC 7789V Display Colors 262K 3.5 Inch TFT LCD Touch Screen

#### 3.5 inch lcd panel 320x480 tft screen lcd IC 7789V

Chenghao is a professional high-tech enterprise which specializes in LCD slicing and filling, researching, designing, manufacturing and selling of LCD (Liquid Crystal Display), LCM (LCD Modules).

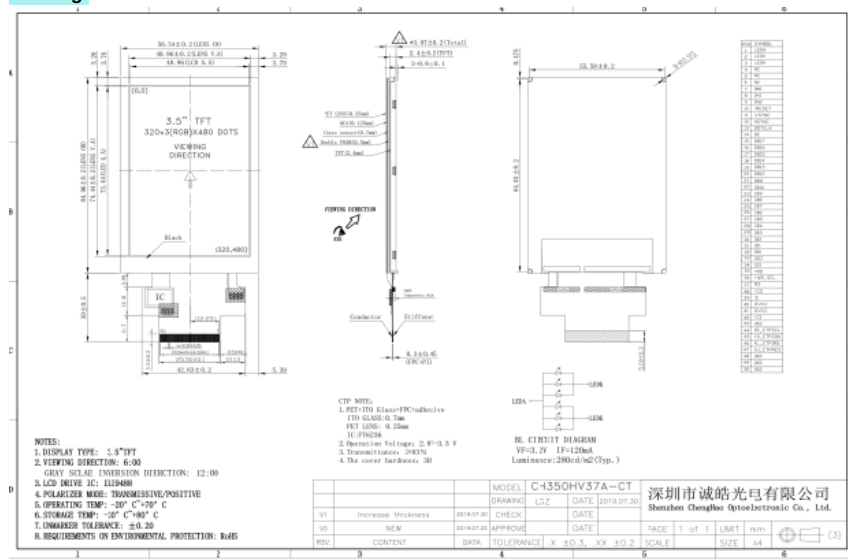
Since Shiny's founding, we see 'innovative technology and reliable quality' as company enterprise mission, and after several years of rapid and healthy expansion, shiny has gathered a number of talented personnel in R&D, technical and management, providing high-quality products and good service to our customers. Chenghao gained a good reputation last years and is a trusted supplier for many partners.

3.5 inch LCD, IPS 320\*240 RGB Interface HOT and NEW TFT LCD Display, LCD Monitors for POS/Elevators Industrial grade quality 3.5 inch LCD, IPS 320\*240 RGB Interface HOT and NEW TFT LCD Display, POS Elevators LCD Screen Monitors.

#### TFT General Information:

MODEL NO.	CH350HV37A-CT
Module type	3.5"TFT + CTP
Display Mode	TN/Transmissive/Normally white
CTP type	P+G
Number of Dots	320*480
Viewing Direction	6 o'clock
Gray Scale Inversion Direction	12 o'clock
Module size	56.54(W)*84.96(H)*3.97(T)mm
TFT Active area	48.96(W)*73.44(H)mm
TFT Dot pitch	0.153(W)*0.153(H)mm
Interface	4-lines_8bit / 3-lines_9bit SPI 8-/9-/16-/18-bit 8080 system interface 16-/18-bit RGB interface
Backlight Type	White LED
Luminance	280cd/m2

#### drawing:



#### Packaging & Shipping:

##### Packaging Details:

1. All the products are packed in right way to keep it safe.
2. For small sizes of products we use tray + carton,
3. For bigger sizes we use foam slot + carton.
4. we also design packages according to customers' requirements

##### Shipping Details:

For small quantity orders: we ship by UPS Air-Express, or DHL/FEDEX/TNT/ EMS Express service, it is safe and fast.

#### Our services:

##### 1. Why choose ChengHao Optoelectronic?

High Service Quality: OEM & ODM service; Reply in 24 hours; All of our products are up to the international quality standards

High Product Quality: Our well equipment and strict function testing in the productive process guarantee the excellent quality of each product.

Professional Manufacturer: household appliances, industrial control, medical equipment, POS machine, instruments and meters, GPS

navigation, financial equipment, consumer equipment, information appliances.

**2. Could I order one piece for sample to test the quality?**

Yes, We recommend checking the sample before order. You could order the sample before your order.

**3. May I have your catalogue and price list for trial order in MOQ quantity?**

All our products are displayed on Google platform. Please take a closer look and choose the model you are interested in on our website.

**4. If I order big quantity, what's the good price?**

Please send the details enquiry to us, such as the item number, quantity for each item, quality request, Logo, payment terms, transport method, discharge place etc. We will make the accurate quotation to you as soon as possible.

**5. What are my payment options?**

For samples and small account, it is 100% in advance.

For mass production, it is 30% in advance and 70% balance.

Welcome West Union, TT. bank account and Paypal.

**6. How long will it take to ship my order?**

As long as there is stock available, ChengHao Optoelectronic usually ships items in 1 to 3 working days for samples and within 7 to 15 days for customized order once receiving the confirmation of a new order. The order will not be confirmed until the payment reaches ChengHao Optoelectronic bank account. If we are temporarily out of stock, we will do our best to inform you of the estimated lead time.

**7. What does your warranty cover?**

ChengHao Optoelectronic product is backed by a 1-year limited warranty against manufacturing defects (material or workmanship). Missing/lost or worn out parts are not covered under our warranty.



**Shenzhen ChengHao Optoelectronic Co., Ltd.**



+86 755-27806536



add@chenghaolcm.com



chenghaolcd.com

7th floor, building C5, Hengfeng Industrial City, Hangcheng street, Bao'an District, Shenzhen