



800x480 TFT LCD Capacitive Touchscreen

Our Product Introduction

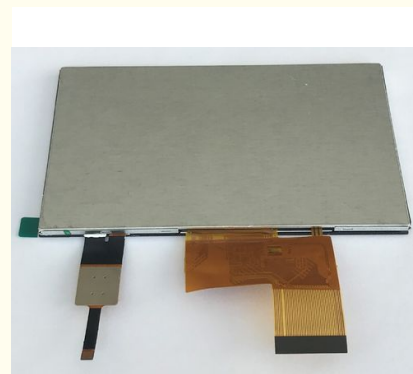
Basic Information

- Place of Origin: ShenZhen, China
- Brand Name: 5.0 Inch TFT display
- Certification: ROHS ISO9001 CE
- Model Number: CH500WV03A-CTA
- Minimum Order Quantity: 100 pcs
- Price: /
- Packaging Details: All the products are packed in right way to keep it safe. For small sizes of products we use tray + carton, For bigger sizes we use foam slot + carton. we also design packages according to customers' requirements
- Delivery Time: 7-15 working days
- Payment Terms: T/T
- Supply Ability: 250Kpcs/month

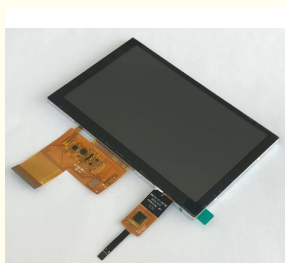


Product Specification

- Size: 5" TFT Capacitive Screen
- Dot Arrangement: 800X480
- Display Mode: TN / Transmission / Normally White
- Module Size: 120.7(W)X75.8(H)X4.65(T)mm
- TFT Active Area: 108(W)X64.8(H)mm
- Luminance: 300-800cd/m2
- Interface: RGB CTP: I2C
- Highlight: 800x480 TFT LCD Capacitive Touchscreen, RGB TFT LCD Capacitive Touchscreen, 800x480



More Images



Product Description

800x480 TFT LCD Capacitive Touchscreen

5 inch tft lcd 800x480 Capacitive touch display RGB Interface

About Capacitive touch:

====>Structure: G+G, G+F, G+F+F

Cover Lens: Glass (AR, AF, AG coating can be added), PMMA etc.

Driver: FT, GT, Atmel, ILITEK, ST, EETI etc.

We have standard one and also available to make the customization with different size, shape, color, logo etc.

====>How to customize the product?

A: Customized procedures goes like this: Project scope clarification → Fill TSD Requirement Form → Engineering analysis → Cost Evaluation → Customer confirmation → Providing drawing → Customer confirmation → Sampling → Customer approval → Mass production

1)ChengHao TFT

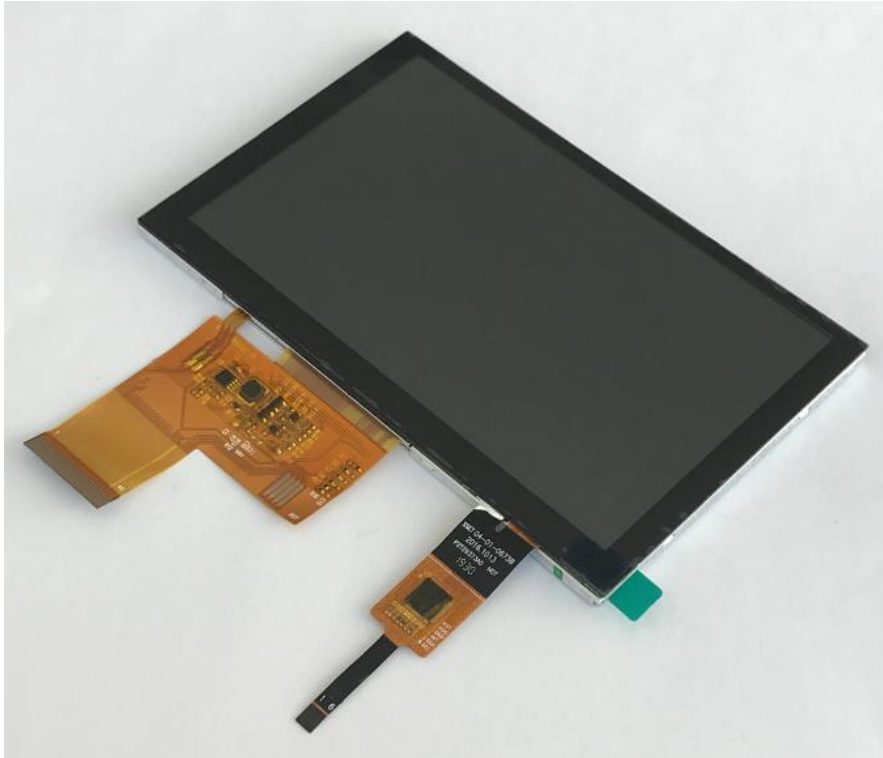
Size: our standard TFT LCD displays range from 0.96 inch to 10.1 inch

Brightness: can be designed according to customer requirements

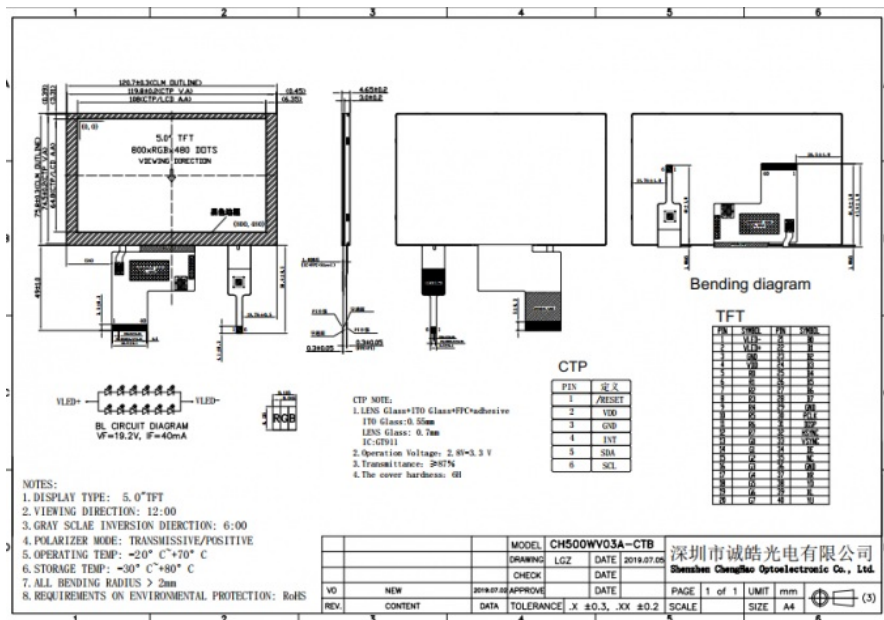
Polarizer: TV, EWV, ofilm

Connection: supports various FPC designs.

Front view of product



Drawing:



1. 5 inch tft lcd 800x480 Capacitive touch dispaly RGB Interface
2. MODEL NO.: CH500WV06A-CTA
3. Module type: 5.0" TFT + CTP
4. Display Mode: TN/Transmissive/Normally White
5. Number of Dots: 800*3(RGB)*480
6. Viewing Direction: 12 o'clock
7. Gray Scale Inversion Direction: 6 o'clock
8. Module size: 120.7(W)*75.8(H)*4.65(T)mm
9. TFT Active area: 108(W)*64.8(H)mm
10. TFT Dot pitch: 0.135(W)*0.135(H)mm
11. Interface: TFT: 24-bit RGB CTP: I2C
12. Backlight Type: White LED
13. Luminance: 300cd/m2

About Cheng Hao:

Chenghao Optoelectronics has first-class automatic production equipment and professional management, R&D and production teams. At present, there are 3 full automatic production lines with a monthly output of 1KK color TFT display modules, and there are more than 150 employees. With the product design principle of "safety, stability, foresight and fashion", the company is committed to the development, production, sales and service of high-end display products. With actively innovation, continuously applying advanced technology to product R&D, we can effectively support our customers to get the market opportunity of terminal products, and can provide customized overall solutions at any time according to market and user demand changes.

Packaging & Shipping

Packaging Details:

1. All the products are packed in right way to keep it safe.
2. For small sizes of products we use tray + carton,
3. For bigger sizes we use foam slot + carton.
4. we also design packages according to customers' requirements

Shipping Details:

For small quantity orders: we ship by UPS Air-Express, or DHL/FEDEX/TNT/ EMS Express service, it is safe and fast.

Our services:

1. Why choose ChengHao Optoelectronic?

High Service Quality: OEM & ODM service; Reply in 24 hours; All of our products are up to the international quality standards

High Product Quality: Our well equipment and strict function testing in the productive

process guarantee the excellent quality of each product.

Professional Manufacturer: household appliances, industrial control, medical equipment, POS machine, instruments and meters, GPS navigation, financial equipment, consumer equipment, information appliances.

2. Could I order one piece for sample to test the quality?

Yes, We recommend checking the sample before order. You could order the sample before your order.

3. May I have your catalogue and price list for trial order in MOQ quantity?

All our products are displayed on Google platform. Please take a closer look and choose the model you are interested in on our website.

4. If I order big quantity, what's the good price?

Please send the details enquiry to us, such as the item number, quantity for each item, quality request, Logo, payment terms, transport method, discharge place etc. We will make the accurate quotation to you as soon as possible.

5. What are my payment options?

For samples and small account, it is 100% in advance.

For mass production, it is 30% in advance and 70% balance.

Welcome West Union, TT. bank account and Paypal.

6. How long will it take to ship my order?

As long as there is stock available, ChengHao Optoelectronic usually ships items in 1 to 3 working days for samples and within 7 to 15 days for customized order once receiving the confirmation of a new order. The order will not be confirmed until the payment reaches ChengHao Optoelectronic bank account. If we are temporarily out of stock, we will do our best to inform you of the estimated lead time.

7. What does your warranty cover?

ChengHao Optoelectronic product is backed by a 1-year limited warranty against manufacturing defects (material or workmanship). Missing/lost or worn out parts are not covered under our warranty.



Shenzhen ChengHao Optoelectronic Co., Ltd.



+86 755-27806536



add@chenghaolcm.com



chenghaolcd.com

7th floor, building C5, Hengfeng Industrial City, Hangcheng street, Bao'an District, Shenzhen